

MAINTENANCE AND OPERATION
INSTRUCTION MANUAL

Band Scanner Pro

FM Band Spectrum Analyzer
and RDS/RBDS Decoder-Reader



Contents

Introduction.....	6
General Information.....	7
<i>Product Features.....</i>	<i>8</i>
<i>Technical Specifications.....</i>	<i>9</i>
<i>MPX/RDS Sample Unit.....</i>	<i>10</i>
<i>Front Panel.....</i>	<i>11</i>
<i>Rear Panel.....</i>	<i>11</i>
Technical Matters.....	12
Before you start.....	13
<i>Unpacking and Inspection.....</i>	<i>13</i>
<i>Radio Frequency Interference (RFI).....</i>	<i>13</i>
RDS: Europe vs America	14
The RDS System	14
RDS Applications Supported	15
<i>AF</i>	<i>15</i>
<i>CT.....</i>	<i>15</i>
<i>DI</i>	<i>15</i>
<i>ECC.....</i>	<i>15</i>
<i>EON.....</i>	<i>16</i>
<i>EWS.....</i>	<i>16</i>
<i>IH.....</i>	<i>16</i>
<i>M/S</i>	<i>16</i>
<i>ODA.....</i>	<i>16</i>
<i>PI</i>	<i>17</i>
<i>PIN</i>	<i>17</i>
<i>PS</i>	<i>17</i>
<i>PTY</i>	<i>17</i>
<i>PTYN.....</i>	<i>17</i>
<i>RT</i>	<i>18</i>
<i>RT+</i>	<i>18</i>
<i>TA</i>	<i>19</i>
<i>TDC.....</i>	<i>19</i>
<i>TMC.....</i>	<i>19</i>
<i>TP</i>	<i>19</i>

Loading and Running The Software	20
<i>Minimal System Requirements</i>	20
<i>Installing the Software.....</i>	20
<i>Installing The USB Port Driver</i>	21
<i>Manual installation under Windows 7.....</i>	21
<i>Manual installation under Windows XP.....</i>	24
Using the Band Scanner Software	26
General Settings	28
Common Visuals.....	29
FM Tuner, Modes and Presets.....	30
<i>FM Tuner Settings</i>	31
<i>Memory Presets.....</i>	32
FM Band Spectrum Analyzer	33
<i>Band Analyzer Settings.....</i>	35
<i>Band Analyze.....</i>	36
<i>Peak Find Methods</i>	37
<i>Highest Peak.....</i>	37
<i>All Peaks.....</i>	37
<i>Every 100 kHz.....</i>	37
<i>Band Info Table</i>	38
<i>Band Analyzer Results Saving.....</i>	39
<i>Band Comparison.....</i>	40
<i>Band Analyzer Extras.....</i>	41
FM Analyzer	42
<i>Integration Defined</i>	42
<i>US FCC Measurement Method</i>	42
<i>Main Screen.....</i>	43
<i>FM Analyzer Settings</i>	45
<i>FM Spectrum.....</i>	46
<i>MPX Deviation.....</i>	47
<i>PILOT Level.....</i>	48
<i>RDS Level.....</i>	49
<i>LEFT & RIGHT Level</i>	50
RDS Data and Detailed RDS Group's Analyzer	51
<i>Section "MAIN" with all mandatory RDS functions</i>	51
<i>Raw RDS Data Stream.....</i>	53
<i>Group Detector.....</i>	54
<i>Group Analyzer</i>	55
<i>Group Replayer.....</i>	56

Short description of all groups analyzed	57
<i>Type 0A & 0B groups: Basic tuning and switching information.....</i>	<i>57</i>
<i>Type 1A & 1B groups: Program Item Number and slow labeling codes</i>	<i>58</i>
<i>Type 2A & 2B groups: Radiotext.....</i>	<i>59</i>
<i>Type 3A & 3B groups: Application identification for Open data.....</i>	<i>60</i>
<i>Type 4A & 4B groups: Clock-time and date, Open data application.....</i>	<i>61</i>
<i>Type 5A & 5B groups: Transparent data channels or ODA.....</i>	<i>62</i>
<i>Type 6A & 6B groups: In-house applications or ODA.....</i>	<i>63</i>
<i>Type 7A & 7B groups: Radio Paging or ODA</i>	<i>64</i>
<i>Type 8A & 8B groups: Traffic Message Channel or ODA</i>	<i>65</i>
<i>Type 9A & 9B groups: Emergency warning systems or ODA.....</i>	<i>66</i>
<i>Type 10A & 10B groups: Program Type Name (10A) and Open data (10B).....</i>	<i>67</i>
<i>Type 11A & 11B groups: Open Data Application</i>	<i>68</i>
<i>Type 12A & 12B groups: Open Data Application.....</i>	<i>69</i>
<i>Type 13A & 13B groups: Enhanced Radio Paging or ODA</i>	<i>70</i>
<i>Type 14A & 14B groups: Enhanced Other Networks information (EON).....</i>	<i>71</i>
<i>Type 15A & 15B groups: Fast basic tuning and switching information.....</i>	<i>72</i>
<i>RadioText Plus (RT+).....</i>	<i>73</i>
Print Capabilities	74
Log Capabilities	75
<i>RDS Log Settings.....</i>	<i>75</i>
<i>Tracking the History Saved in the RDS Log.....</i>	<i>76</i>
<i>Tracking the History Saved in the SYSTEM Log.....</i>	<i>79</i>
<i>Log Export.....</i>	<i>80</i>
<i>Automatic Log Maintenance</i>	<i>81</i>
Specialities	82
<i>Main-PS or 0AB-PS</i>	<i>82</i>
<i>Where my Alternative Frequencies gone?.....</i>	<i>82</i>
WARRANTY TERMS AND CONDITIONS.....	83
Product Registration Card.....	84
APPENDIX A	85
<i>PTY Code Description Used in RBDS Mode – North America.....</i>	<i>85</i>
APPENDIX B	86
<i>PTY Code Description Used in RDS Mode – Europe, Asia</i>	<i>86</i>

THIS PAGE
IS INTENTIONALLY
LEFT BLANK

Introduction

DEVA Broadcast Ltd. was established in 1997 as a broadcasting and telecommunications equipment importer for Bulgaria and Eastern Europe regions. Subsequently, DEVA Broadcast Ltd. has developed and produced a wide range of low and mid power transmitters, RDS/RBDS Encoders and Decoders, Modulation Monitors, Remote Controls, Site monitoring and other systems for many companies. Our high degree engineers accomplish their bright ideas through successful engineering, marketing and management in DEVA Broadcast Ltd.'s Headquarter in Bulgaria.

During the last ten years the company products have become our partners' best sellers. After detailed marketing analysis, our team has decided to launch its own brand products based on the latest technologies in the broadcasting business. The company's main goal is to design, develop and offer a complete line of high quality and competitive products for FM and Digital Radio, Radio Networks, Telecommunication Operators and regulation authorities. We base our market authority position on our good after sales support and relation with the clients.

Since 2003 DEVA Broadcast Ltd. has been ISO 9001 certified .

The contractors of DEVA Broadcast Ltd. are satisfied with the permanent business comfort and to their own confession they owe it to a great extent as well as their prosperity to the loyal partnership of our company.

General Information

Band Scanner Pro is a tool to evaluate FM broadcast band congestion and to log station identification parameters. The Band Scanner Pro can measure RF level, MPX deviation, Left & Right Audio levels, RDS and Pilot injection levels. The system is powered by the USB port of any Windows PC. Supplied free of charge Windows software sweeps the receiver across the FM band, logging every carrier and generating a spectrum display of carrier level vs. frequency. It then analyzes each carrier and creates a station list. Stations with an RDS presence are further refined to show all the radio data groups being transmitted. Its interface is like a portable radio: It may be tuned manually through the receiver screen or by double-clicking a point on the spectrum plot or an entry on the station list. Spectrum plots may be saved as jpg or bmp files. The RDS data error level is graphed in a separate window on the receiver screen. The program can be monitored with headphones plugged into a standard 1/8" jack.

PRODUCT FEATURES

- FM Band 87 – 108 MHz Spectrum analyzer
- MPX, PILOT & RDS deviation meters
- External composite MPX and RDS input
- Built-in Stereo decoder; LEFT and RIGHT level meters
- Auto search tuning
- Headphones audio output
- Full feature RDS and RBDS decoder
- RDS/RBDS Groups Detector & Analyzer
- RDS/RBDS Stream BER meter
- RDS/RBDS Data Logger
- View playlists of the competitive stations
- Saving and exporting the playlists to Excel file
- Compare the signal strength to competitors and other stations
- Pocket size USB powered box. No external power supply required
- Tracking all the detailed histories saved in the RDS Data Log
- TCP/IP Remote management and control via Internet
- Remote audio listening and logging via Internet

TECHNICAL SPECIFICATIONS

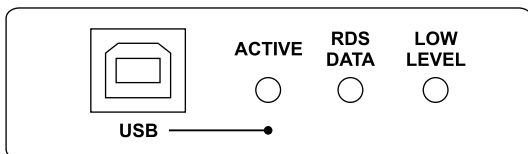
FM RECEIVER	
FM frequency	87.0-108.0 MHz
RDS sensitivity	0 error at $V_{rf} = -90\text{dB}\mu\text{V}$, 4kHz RDS deviation, no modulation
Strong fields	AGC
RF level evaluation	$\pm 4\text{dB}$ from 20°C to 30°C, from 20dB μV to 80dB μV without modulation
Dynamic	0 to 84dB μV
Attenuator	6dB built-in
AUDIO, MPX, PILOT, RDS LEVELS	
Measurement validity	RF level preferably > 50dB
Multiplex level	Peak level displayed, 1000 samples over 1 second
Audio level	Peak level displayed, 1000 samples over 1 second
Pilot level	Mean peak level, 1000 samples over 1 second
RDS level	Mean peak level, 1000 samples over 1 second
Accuracy of MPX deviation display	$\pm 5\text{kHz}$, $\pm 2\text{kHz}$ typ
Accuracy of audio level display	$\pm 5\%$
Accuracy of sub-carrier level displays	$\pm 10\%$ typical and not guaranteed
FM ANTENNA INPUT	
Connector	'F' on rear panel, Impedance = 75 Ω
External attenuator	No
FM MULTIPLEX INPUT	
Connector	BNC, Impedance = 50 k Ω
Max input level	5000mV p-p
STEREO DECODING	
Stereo separation	>20dB
Typical separation	Approximately 26dB to 35dB
RDS DATA DECODING	
Standards	European RDS CENELEC, United States RBDS NRSC
Error Correction	Yes
Group counting	Yes
Error counting	Yes
AF decoding	Yes
PI, PTY, DI, MS	Yes
TA/TP	Yes
RT, PS, CT	Yes
EON, PTYN, SLC, ODA	Yes
USER INTERFACE	
Indicators	3 LEDs, front panel
Headphone output	1/8" (3.5mm) phone jack, rear panel

OPERATING CONDITIONS	
Equipment operational	between 10° and 40°C
EMC immunity	6V/m
HEADPHONES OUTPUT	
Connector	Stereo, 1/8" (3.5mm) phone jack
Volume	Fixed
COMMUNICATION	
Type	USB 2.0 compatible
Connector	B-type, front panel
POWER REQUIREMENT	
Power supply	USB powered
Connector	B-type, front panel
SIZE AND WEIGHT	
Dimensions (W x H x D)	2.9" x 1" x 4.3", 73.6mm x 25.4mm x 109mm
Weight	2 lbs, 1kg

MPX/RDS SAMPLE UNIT

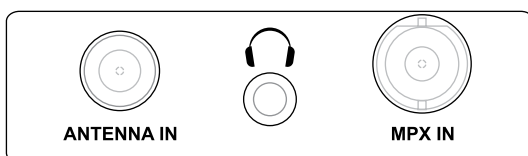
This unbalanced input is getting the composite/MPX output from the stereo generator. An MPX level between 0.5 and 5 volts p-p is required, this level referenced to 100% modulation ($\pm 75\text{kHz}$ carrier deviation). In the event that the stereo generator is incorporated as part of the exciter, such that a Composite/MPX feed is not available, a direct RDS encoder signal may also be applied to this input.

FRONT PANEL



- ACTIVE** This LED lights whenever the unit is connected to the PC through USB
- RDS DATA** This indicator shows that the 57kHz RDS subcarrier is present and RDS data is actually received.
- LOW SIGNAL** This LED shows that the incoming RF signal of the defined frequency is less than 19dB μ V

REAR PANEL



- ANTENNA IN** The consumer-standard F connector is the ANTENNA IN port
- PHONES OUT** The 1/8" (3.5mm) phone jack provides the audio signal of tuned station for listening
- MPX IN** The MPX IN BNC connector must receive a feed of the Composite/MPX signal from the stereo generator.

Technical Matters

The Band Scanner Pro is simple and small. It utilizes surface-mounted (SMD) components, some of which are 'application-specific'. Moreover, certain chips require 'firmware' programming. To a large extent this precludes servicing the unit in the field. For these reasons, and also because of the small format of this Manual, we have elected to dispense with the schematic diagram, servicing instructions and a parts listing. Because it is so small and light (and because it is not in the program signal path!), returning a product such as the Band Scanner Pro for factory servicing is an option that we encourage. DEVA Broadcast Ltd. has never considered factory repair charges as a significant source of revenue; you would be astonished at how reasonable our rates actually are! Having said all that, our policy has always been one of 'full disclosure.' We feel that, unless you are doing something nefarious, there should be no reason to hide anything. With a clear conscience we will cheerfully provide additional documentation and divulge any secrets concerning the Band Scanner Pro upon request.

Before you start

UNPACKING AND INSPECTION

Immediately upon receipt of the equipment, inspect for possible shipping damage. If damage is found or suspected, notify the carrier at once, and then contact DEVA Broadcast Ltd. We recommend that you set aside the original shipping carton and packing materials for possible reuse. In the event of return for Warranty repair, shipping damage sustained as a result of improper packing for return may *invalidate the Warranty!*

IT IS VERY IMPORTANT that you complete and return the Warranty Registration Card included with this Manual. Not only does this assure coverage of the equipment under terms of the Warranty, and provide some means of trace in the case of lost or stolen gear, but also the user will automatically receive specific SERVICE OR MODIFICATION INSTRUCTIONS should these be forthcoming from DEVA Broadcast Ltd.

RADIO FREQUENCY INTERFERENCE (RFI)

Although we have anticipated Band Scanner Pro installation in the immediate proximity of broadcast transmitters, please do practice some care using the unit away from *abnormally* high RF fields.

RDS: Europe vs America

The European Broadcasting Union (EBU) and its member countries originated the concept of “Radio Data” transmission. The European RDS specification, CENELEC Standard EN50067, was first published in 1984. It was revised in 1986, 1990, 1991 and 1992.

European RDS has grown in use following initial adoption of the Standard. RDS is nearly universal throughout Europe; it is almost impossible to find a European FM broadcasting station that does not carry a radio data subcarrier.

The popularity of RDS in Europe is very much in contrast with initial reluctance on the part of US broadcasters to embrace this technology. This can be ascribed to material differences in broadcasting practices.

Almost without exception, FM broadcasting in the United States is ‘detached’ and independent; that is, each station originates its own programming. One exception might be America’s National Public Radio, though for most of the broadcast day even NPR stations originate, or at least schedule, their own programs.

Much of European broadcasting is similar to the concept of network radio that was common in the US prior to the 1950s. In Europe, a central program originator may have many transmitting facilities of modest power situated throughout the country, at several different frequencies to blanket a designated service area. The European disposition toward lower-power transmitters can be found on the “local radio” level as well.

The European concept of a service area equates to the US broadcaster’s market. The subtle difference between these designations further characterizes broadcasting practices and ethics. RDS benefits the European broadcaster through almost an altruistic endeavor to be of service to his listeners. The US broadcaster is marketing his programming, and is primarily interested in how he can create additional revenue from RDS.

The RDS System

RDS is a digital data channel transmitted as a low-level subcarrier above the range of the composite stereo program signal in the FM baseband. The data transmission (baud) rate is comparatively low, yet it is quite robust because of data redundancy and effective error correction.

It is not within the scope of this Manual to cover the details of RDS subcarrier coding and modulation. For this the reader is directed to the Specification appropriate to his location, either the CENELEC EN50067 Specification for Europe, or the United States NRSC Specification. It is assumed that the user has some familiarity with the concept of RDS, since the balance of this Manual will deal with specific implication of RDS implemented with the Band Scanner Pro.

RDS Applications Supported

The following is an alphabetical listing of RDS applications that are fully supported by the Band Scanner Pro. The standardized RDS application abbreviation is followed by an expansion of the application name and a short explanation of the function.

AF

List of Alternative Frequencies: A network broadcaster, or one with low-power rebroadcast transmitters (translators) to fill holes in his coverage area, can include a list of all frequencies where the identical program can be heard simultaneously. The RDS receiver (particularly the upscale car radio) constantly searches for the best signal that carries the very same program. When a better signal is found, the radio re-tunes with no noticeable interruption. The principal utility of this RDS function is with European radio networks and US stations with 'translators.'

CT

Clock Time and date: Time and date codes should use Coordinated Universal Time (UTC) and Modified Julian Day (MJD). If MJD = 0 the receiver should not be updated. The listener, however, will not use this information directly and the conversion to local time and date will be made in the receiver's circuitry. CT is used as time stamp by various RDS applications and thus it must be accurate.

DI

Decoder Information: This is one of several 'flags' that convey yes/no or other very basic data. This particular flag tells the receiver whether the broadcast is monaural, or is being transmitted in any of several methods of stereo or binaural broadcasting. As many as 16 encoding options may be accommodated! This is a rather esoteric function and, thus far, remains unused both in Europe and in the US.

ECC

Extended Country Code: RDS uses its own country codes. The first most significant bits of the PI code carry the RDS country code. The four bit coding structure only permits the definition of 15 different codes, 1 to F (hex). Since there are much more countries to be identified, some countries have to share the same code which does not permit unique identification. Hence there is the need to use the Extended Country Code which is transmitted in Variant 0 of Block 3 in type 1A groups and together with the country identification in bits b15 to b12 of the PI code render a unique combination. The ECC consists of eight bits.

EON

Enhanced Other Networks information: This feature can be used to update the information stored in a receiver about program services other than the one received. Alternative frequencies, the PS name, Traffic Program and Traffic Announcement identification as well as Program Type and Program Item Number information can be transmitted for each other service. The relation to the corresponding program is established by means of the relevant Program Identification. Linkage information, consisting of four data elements, provides the means by which several program services may be treated by the receiver as a single service during times a common program is carried. Linkage information also provides a mechanism to signal an extended set of related services.

EWS

Emergency Warning System: The EWS feature is intended to provide for the coding of warning messages. These messages will be broadcast only in cases of emergency and will only be evaluated by special receivers.

IH

In House application: This refers to data to be decoded only by the operator. Some examples noted are identification of transmission origin, remote switching of networks and paging of staff. The applications of coding may be decided by each operator itself.

M/S

Music / Speech Switch: This flag simply indicates whether music or speech is the primary broadcast programming. The purpose of this function is not well explained in the respective Standards; hence it comes as no surprise that it is not widely used.

ODA

Open Data Applications: The Open Data Applications feature allows data applications, not previously specified in EN 50067, to be conveyed in a number of allocated groups in an RDS transmission. The groups allocated are indicated by the use of type 3A group which is used to identify to a receiver the data application in use in accordance with the registration details in the EBU/RDS Forum - Open Data Applications Directory, and the NRSC Open Data Applications Directory.

PI

Program Identification: This block of data identifies the broadcast station with a hexadecimal numerical code, which becomes the “digital signature” of the station. The code is assigned by the broadcasting authority in most countries, but in the US it is calculated from a numerical encoding of station call letters. The receiver processes the PI code to assist automatic tuning features (station memories), and to prevent false switching to alternative frequencies that might be shared by broadcasters in nearby regions.

PIN

Program Item Number: The code should enable receivers and recorders designed to make use of this feature to respond to the particular program item(s) that the user has preselected. Use is made of the scheduled program time, to which is added the day of the month in order to avoid ambiguity.

PS

Program Service Name: This is the station’s “street name” that will appear on the receiver faceplate display. The PS can be up to eight characters in length (including spaces) and can be as simple as the station’s call letters: KWOW or KWOW FM, or a slogan: NEWSTALK or LIVE 95. The Program Service Name is automatically displayed, even on automobile receivers, and because of driving safety considerations broadcasters are generally discouraged from scrolling messages in this field. As a matter of fact, it is a violation of both the CENELEC and the NRSC standards to scroll the PS display, although the practice has become universally common.

PTY

Program Type: The PTY data flag identifies the station format from a collection of pre-defined categories. Many RDS receivers are able to seek the listener’s preferred format automatically. This means that a car radio can switch from a fading station to a stronger one that carries the same variety of music, though not the very same program, as provided by AF switching. The PTY function of RDS helps a broadcaster catch ‘transient audience’ share. A listing of the PTY categories is given in [“APPENDIX A” on page 85](#) and [“APPENDIX B” on page 86](#).

Under some programming circumstances, the PTY identifier may be made ‘dynamic,’ changing between categories for a station that “dayparts” (changes its format for specific time periods). The PTY code is not meant to change from song to song or to accommodate a top-of-the-hour newscast, however.

PTYN

Program TYPe Name: The PTYN feature is used to further describe current PTY. PTYN permits the display of a more specific PTY description that the broadcaster can freely decide (e.g. PTY=4: Sport and PTYN: Football). The PTYN is not intended to change the default eight characters of PTY which will be used during search or wait modes, but only to show in detail the program type once tuned to a program. If the broadcaster is satisfied with a default PTY name, it is not necessary to use additional data capacity for PTYN. The Program Type Name is not intended to be used for automatic PTY selection and must not be used for giving sequential information.

RT

RadioText: This is a 64-character block of plain text that the listener can select for visual display on the faceplate of the radio by pressing an INFO button on the receiver. This function is not available on many automobile radios for safety reasons, which has precipitated the frowned-upon practice of scrolling the PS field instead.

Most radios have limited alphanumeric display capability, so the 64 characters of RadioText march across the front panel, much akin those annoying LED advertising signs found in airport buses or fast food emporia. Like the scrolling-PS implementation, RadioText can announce song titles and performers, run special promotions or contests, or broadcast sponsors' messages.

RT+

RadioText Plus is “semantic analogue radio”. It allows the RDS feature RadioText (RT) to be understood by FM RDS receiving terminals. RT+ is based on RDS RT messages and is completely backwards compatible with RT. RT+ has been designed to let the listener (or user) derive additional benefits from the RDS RadioText service. It enables FM RDS receivers to “understand” the RadioText – to recognize designated objects, to make those objects manageable by the user and thus offer the user direct access to specific elements of RadioText messages. Such an element can, for example, be programme associated metadata such as the Title and the Artist of the currently playing song, or it can be news headlines. This provides the listener with an “mp3-player feeling” while listening to analogue FM radio. The elements can also carry additional service messages or information about the Radio Station such as the telephone number or the web address of the Radio Station's hotline. These objects, or more accurately RT+ information elements carried in the RDS RadioText (RT) messages, are identified by their location within the RT messages and by the class code of their content type. Once an information element is received and understood, a receiver is able to, for example, store the different RT+ information elements and the listener may then select and request a specific content type from the radio's memory at an instant in time that suits the listener's needs. Thus the listener is no longer forced to watch the RT information passing (scrolling) by. Moreover, RT+ offers selected RT message elements to car drivers on a static display, without risk of distracting the attention of the driver. Furthermore, RT+ is well suited for mobile phones with built-in FM receivers: telephone numbers can be directly used to initiate calls, and web addresses can be used to start browsing the web content offered by the radio programme provider. Last but not least, RT+ is also used for satellite radio broadcasting via DVB-S. It may be adopted by DRM and DAB in the future, too.

TA

Traffic Announcement: This is a temporary flag added to the RDS data stream only as a traffic bulletin is being aired. Some RDS car radios can be set to search for traffic bulletins among various TP stations (see TP below) while tuned to a listener's preferred program, or even while playing a tape or CD. As soon as any TP station broadcasts a traffic bulletin, the receiver temporarily switches-over to receive it. When the bulletin is finished, the receiver switches back to the original program, tape or CD.

TDC

Transparent Data Channels: The transparent data channels consist of 32 channels which may be used to send any type of data.

TMC

Traffic Message Channel: This feature is intended to be used for the coded transmission of traffic information.

TP

Traffic Program Identification: The TP flag identifies the station as one that routinely broadcasts traffic bulletins for motorists as part of its normal, everyday programming. When the TP flag is displayed on the receiver faceplate, the radio is searching for traffic announcements. The radio keeps track of TP stations offering this service to speed up the search-and-switch process.

Loading and Running The Software

MINIMAL SYSTEM REQUIREMENTS

Pentium(R) Processor or Compatible
Windows XP and above
512MB RAM
20MB free hard drive space for installation
16 or 32-bit graphics color depth
1024 by 768 pixels screen resolution
Screen DPI setting to 96 dpi
Universal Serial Bus 2.0

NOTE: To avoid hardware conflicts and connection problems, install the software before attempting to connect the Band Scanner Pro with the computer.

INSTALLING THE SOFTWARE

Insert the supplied CD. Click Start, then My Computer, and then double-click the CD Drive (typically D:). Open the Band Scanner Pro folder and double click the installation file to launch the Wizard (shown here) that will guide you through the several installation steps.



Unless you have a specific reason to make changes, simply accept the default recommendations and click Next> at each step.

INSTALLING THE USB PORT DRIVER

Once the programming software has been installed on the computer, a special USB port driver must also be installed if that particular computer is ever to address the Band Scanner Pro through the front-panel USB port.

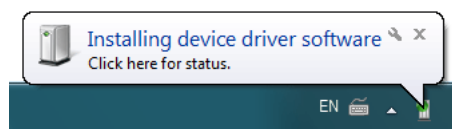
Unless you have deselected the “Install drivers automatically” option from installation wizard, or something went wrong during the installation process, the USB port drivers will be installed automatically and will be ready for use.

When the software was installed, the USB driver was put into a folder within the Band Scanner Pro program folder. With a normal installation (as described above) the driver will have been located here: My Computer \ Local Disk (C:) \ Program Files \ Band Scanner \ Drivers.

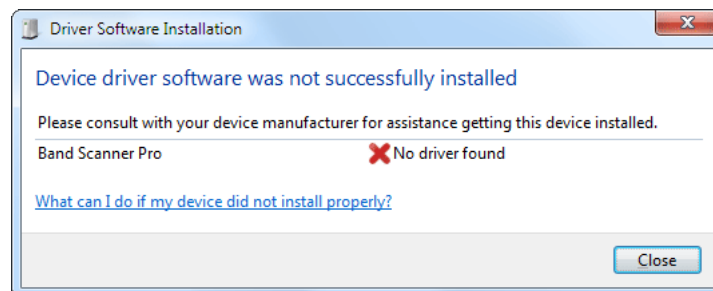
Manual installation under Windows 7

1. With the Band Scanner Pro powered-up, connect the front-panel USB port to the computer using the cable supplied. This should immediately bring up a “Installing driver” balloon notification above the computer Taskbar. Click on balloon for status or proceed to step 3.

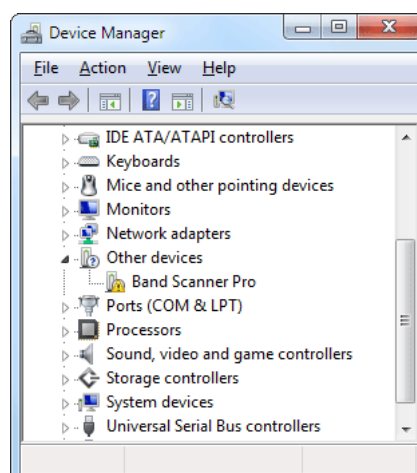
NOTE: notification will bring up only once on first device connection. Subsequent connections will not be notified.



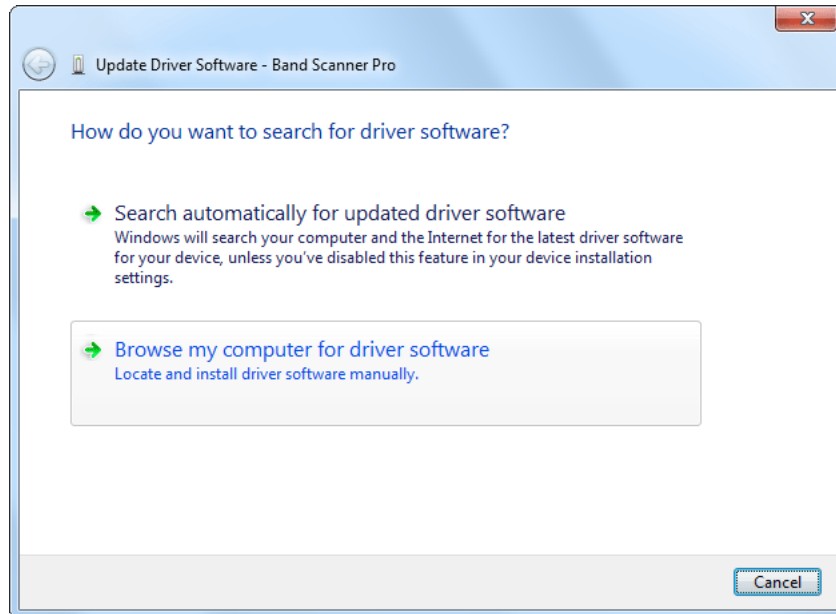
2. Under installation failure, the following status will be shown:



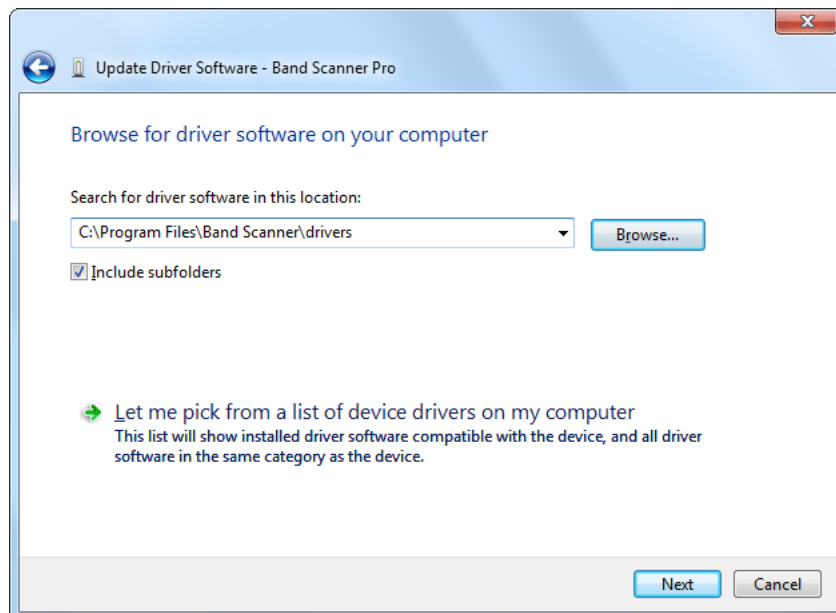
3. Start the Device Manager - Start > Control Panel > Device Manager.



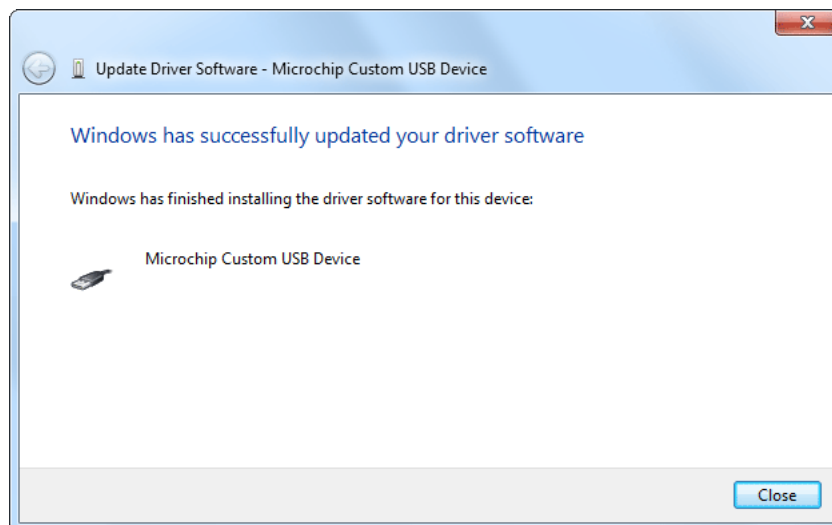
Locate the Band Scanner Pro under the “Other devices” section. Right click on it and select “Update Driver Software”. This should bring up Update Driver Wizard. Select “Browse my computer for driver software”.



4. Click “Browse...” and select the folder where the drivers reside (typically: C:\Program Files \Band Scanner\Drivers.) Click “Next”.



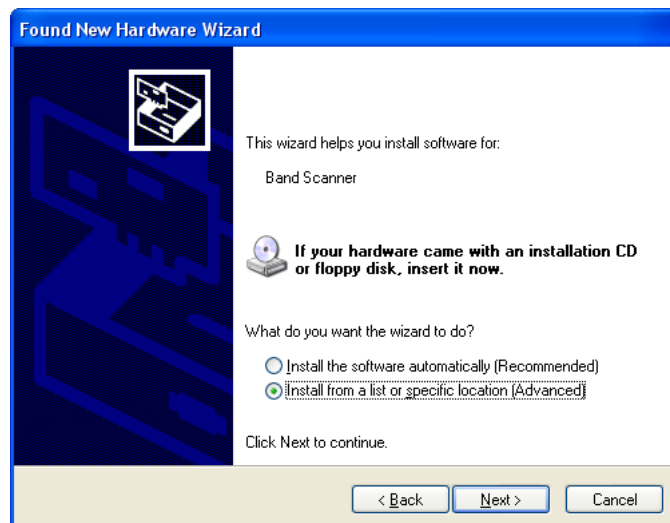
5. Under success the following notification will be shown and the device is ready for use.



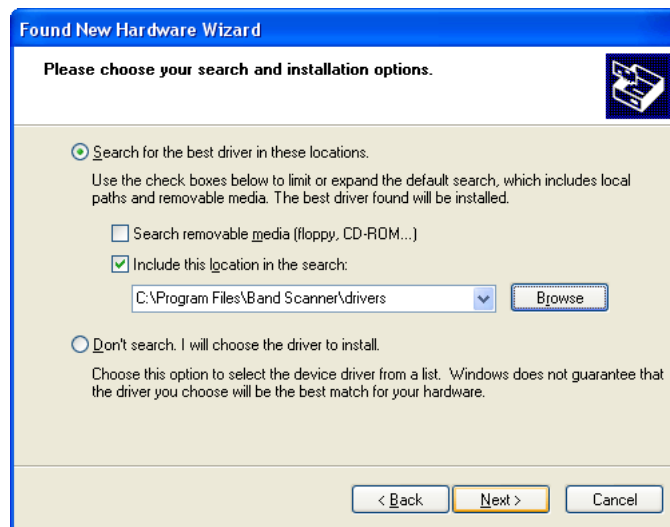
The software installation will have placed an icon on your computer Desktop. Double-click the icon to start the software.

Manual installation under Windows XP

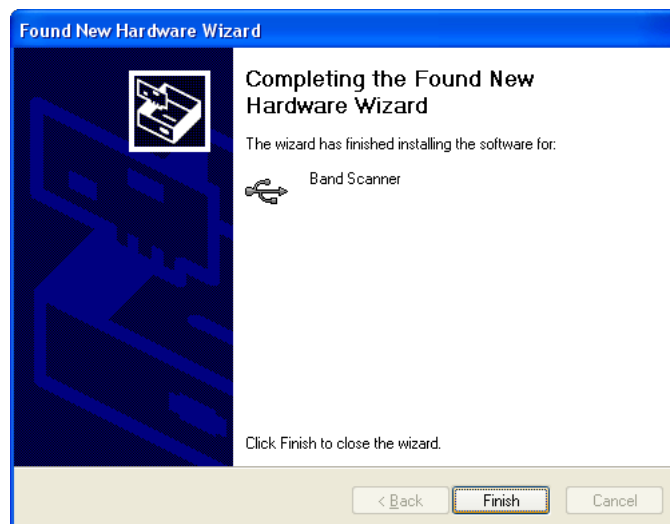
1. With the Band Scanner Pro powered-up, connect the front-panel USB port to the computer using the cable supplied. This should immediately bring up a New Hardware notification above the computer Taskbar and start the Found New Hardware Wizard. Select “No, not this time” and then “Next>”. Select “Install from a list or specific location (Advanced)” and then “Next>”.



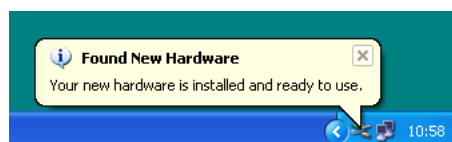
2. This next screen verifies the location of the driver, which resides in folder where the software is installed. Click: “Next>”.



3. Hardware Wizard will inform you when installation is complete. Click: “Finish>”.



4. The driver will be installed, and a notification that the hardware is ready to use will appear above the Taskbar.



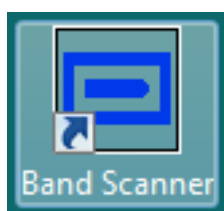
The software installation will have placed an icon on your computer Desktop. Double-click the icon to start the software.

Using the Band Scanner Software

After connecting the Band Scanner Pro to the USB port of any Windows® based PC, it is ready for use and any additional adjustments or settings are not required. In case you would like to measure the band off-air, please connect any external FM antenna to the Antenna In. If any MPX or RDS signal must be analyzed, apply the signal to the MPX/RDS Input.

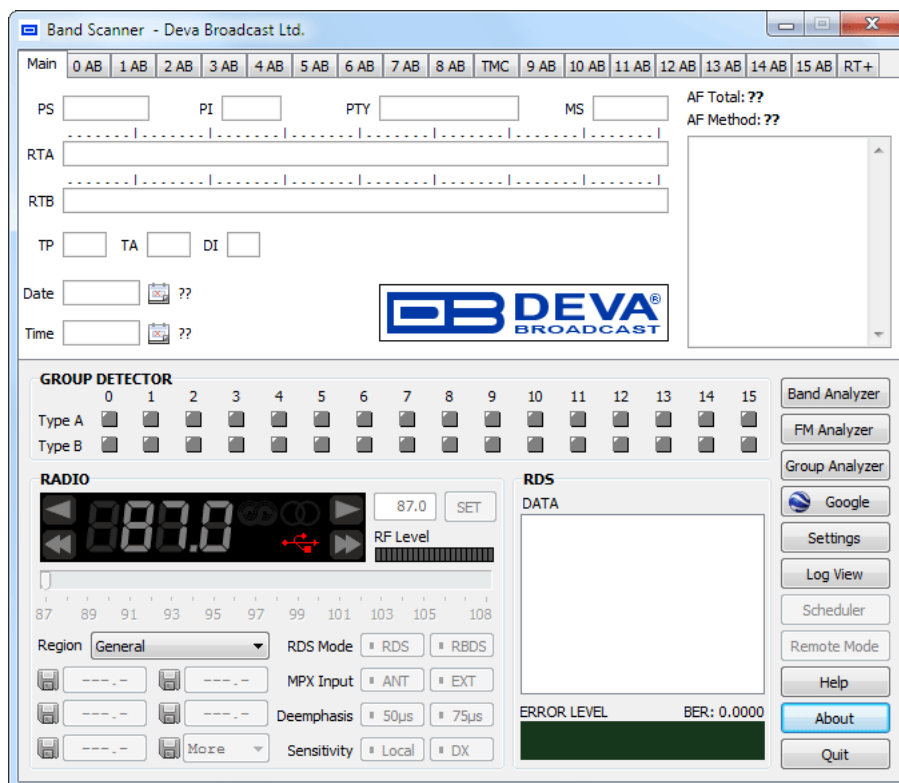
NOTE: The maximum input RF signal to the Antenna Input is 100 dB μ V. Do not connect the Band Scanner Pro directly to any FM Transmitter's MONITOR Output

After the initial software installation, the following shortcut of the software will be located on the desktop.



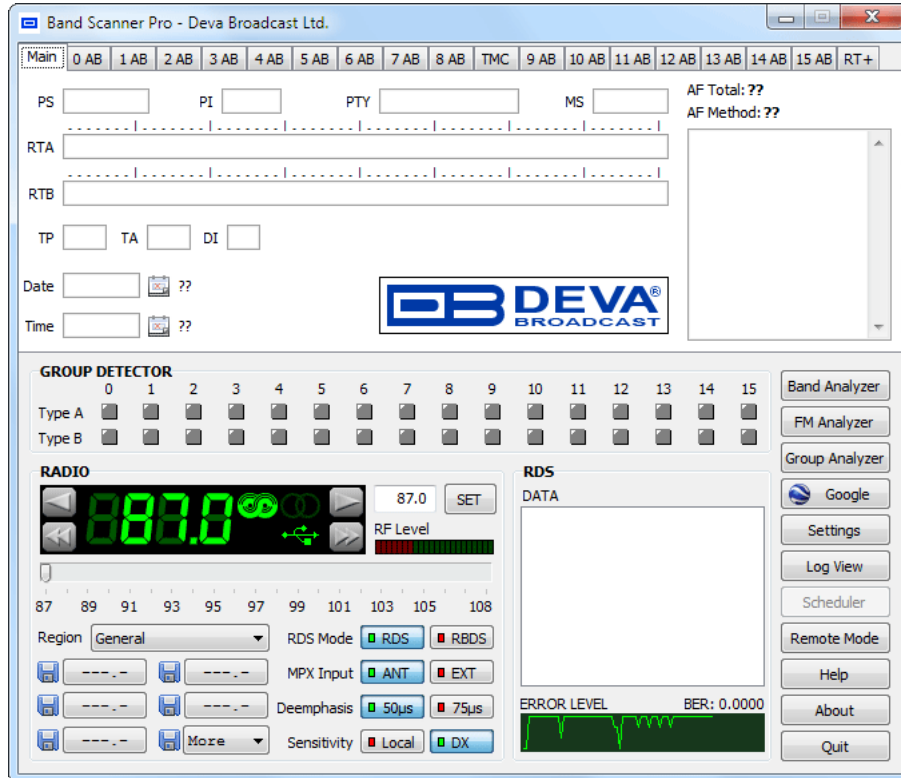
You can launch the program using this shortcut or using Start >Programs > Band Scanner

If the device is not detected the application software will look like this:

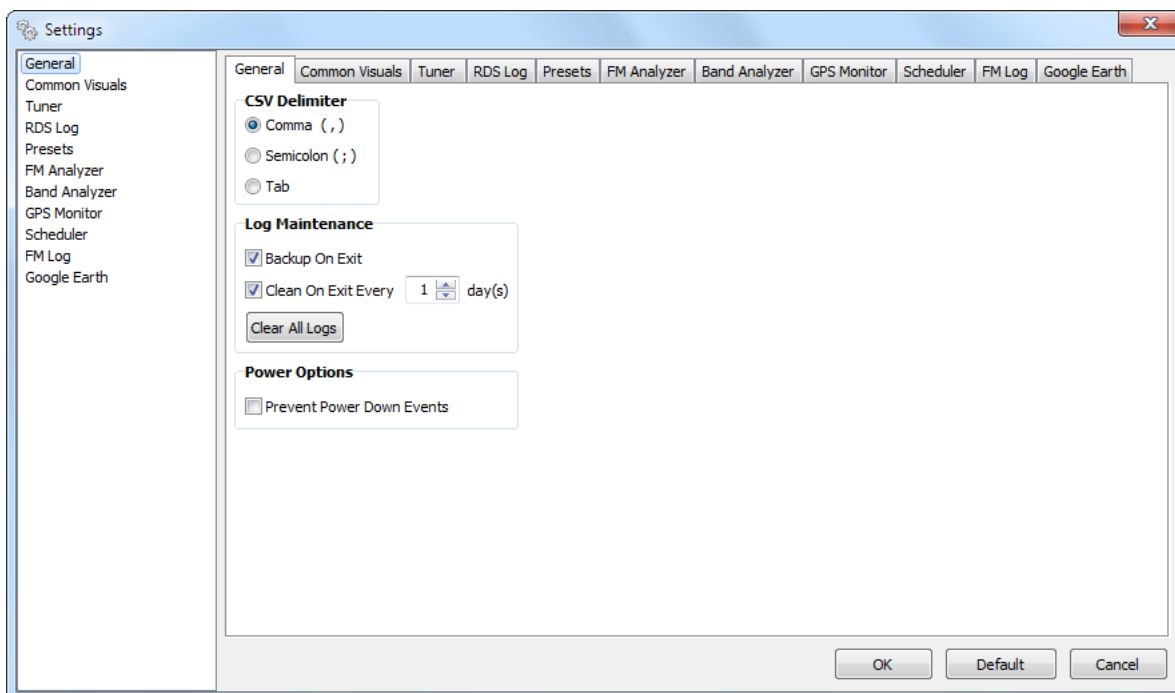


Some of the buttons and functions will be disabled. The USB connectivity indicator will be colored in red.

After connecting the device to the PC where the software is already installed, the USB indicator will become bright green. The software will adjust the unit with the initial data. In case of previous usage of the device, the last settings like frequency and levels will be assigned in the device. If everything is Okay and no problems are detected the software will look like this:



General Settings



CSV Delimiter - choose delimiter which will be used while exporting to CSV-compatible format. ([see “Log Export” on page 80](#))

Backup On Exit - will create a backup copy of entire logs when program is closed.

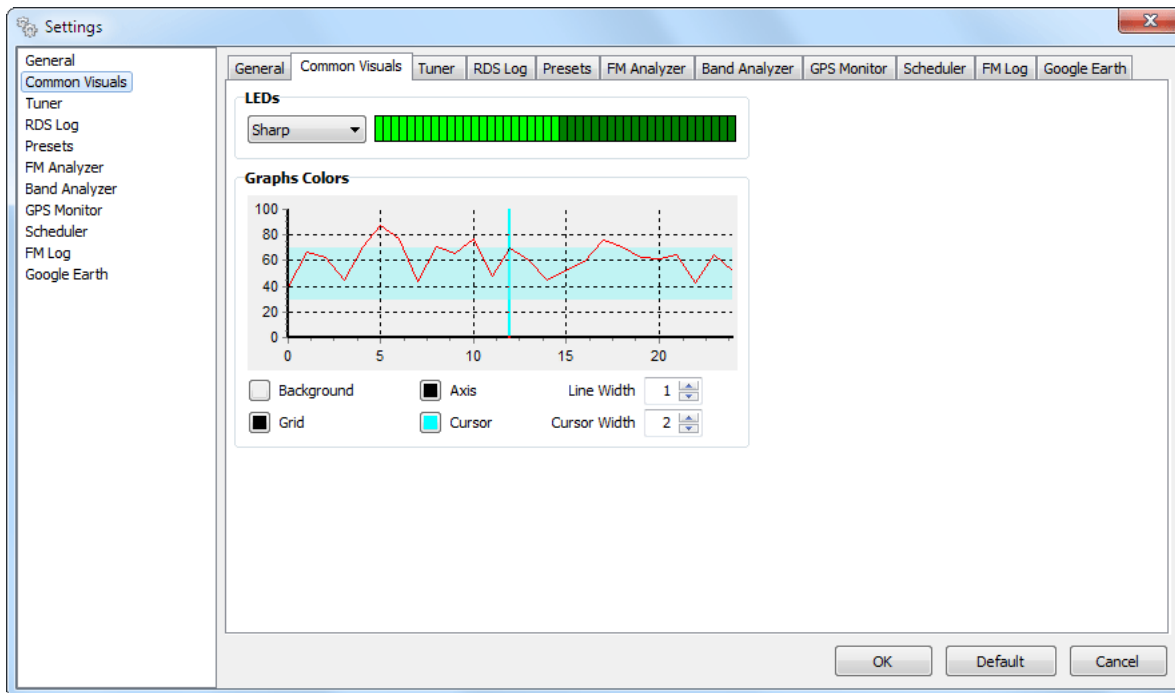
Clean On Exit - will perform clean routines when program is closed. Additional option for process recurrence is available, because cleaning is slow process and is unnecessary to be done frequently.

Clear All Logs - will erase entire logs at once. Each Log can be cleared independently from its own view. It is a good idea to export before clear. ([see “Log Export” on page 80](#))

WARNING: Clearing Logs (independently or not) can not be undone! ([see “Automatic Log Maintenance” on page 81](#))

Prevent Power Down Events - the program will try to prevent system events which will try to power down the USB device. Useful for laptops.

Common Visuals



Having in mind that visual perception differs from person to person, the program offers options to alter the look of the most of its parts.

LEDs - select visual appearances for LEDs



- Sharp



- Semi-Sharp



- Semi-Clear

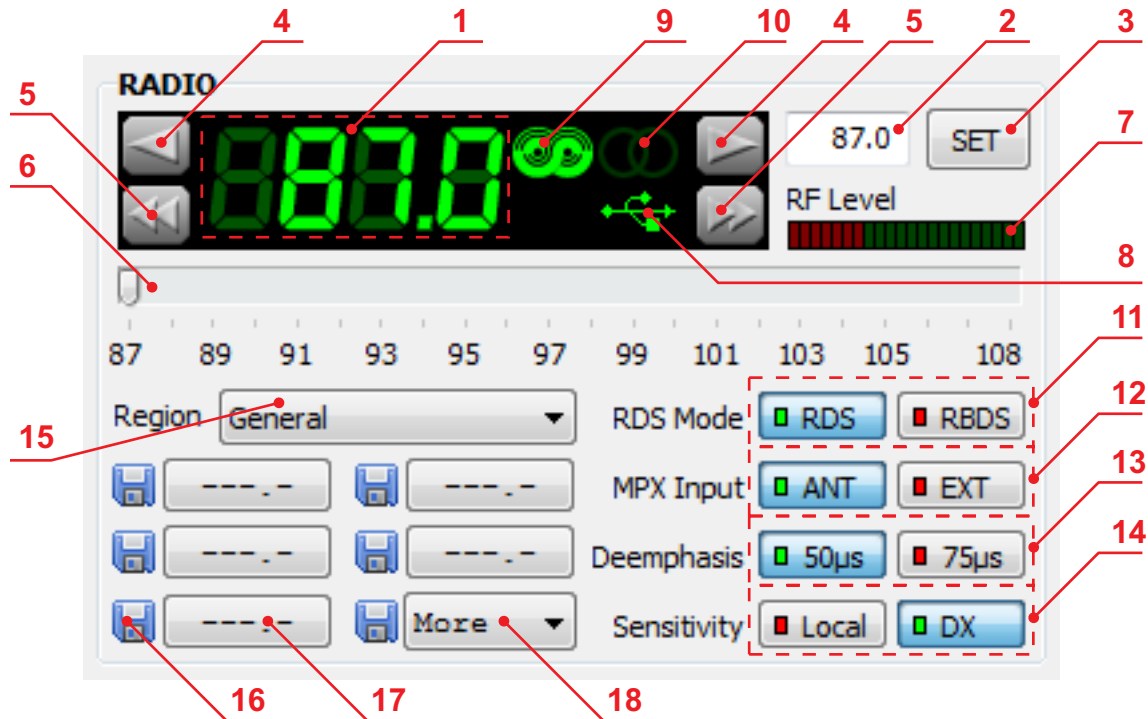


- Clear

Graphs Colors - combine different visual appearances to achieve desired look for Graphs.

NOTE: Some visual settings are only applicable on particular tool. Look in the appropriate settings section.

FM Tuner, Modes and Presets

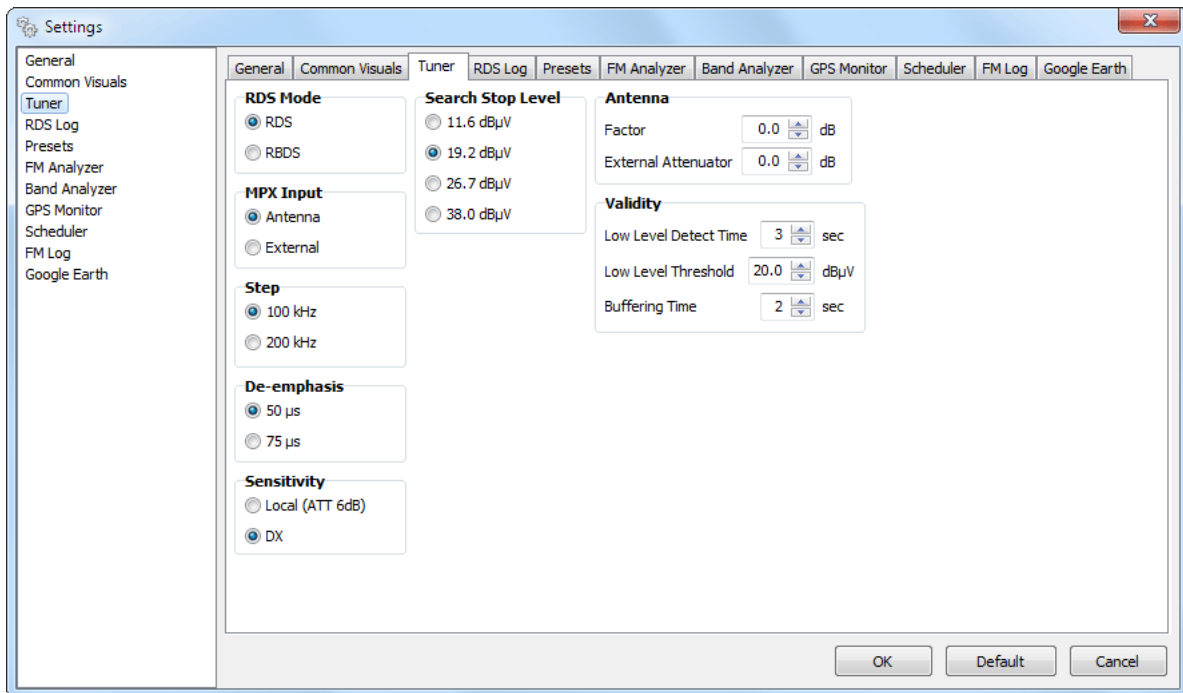


The general management and the most important indications of the Band Scanner Pro are located in this section.

1. Frequency Indicator – Shows the working frequency of the unit.
2. Working frequency entering cell. (press ENTER to set)
3. This button will set the unit at the frequency defined in cell [2].
4. UP and DOWN buttons for adjusting the tuner's frequency. For more information about the steps available and more about this section refer to [“FM Tuner Settings”](#) on page 31.
5. SEEK UP and SEEK DOWN Buttons. (see also [“FM Tuner Settings”](#))
6. Slider for manual adjustment of the frequency. The tuner will accept the desired frequency few seconds after any changes were made.
7. Field Strength Indicator.
8. USB connection indicator.
9. RDS Signal Presence.
10. Stereo Signal Presence.
11. RDS/RBDS Mode Selector.
12. MPX INPUT Signal Selector – Antenna In or MPX/RDS (Extrenal) In.
13. Deemphasis Selector for the Demodulator - 50µs or 75µs
14. Sensitivity Selector - Local (6dB Att.) or DX (no Att.)
15. Region Selector. (see [“Memory Presets”](#) on page 32)
16. Quick Preset Save buttons.
17. Quick Preset Recall buttons.
18. Quick Preset Recall List.

NOTE: When the MPX/RDS In is selected, the Band Analyzer and all its features will be disabled.

FM TUNER SETTINGS



Step – You can choose the frequency adjustment step. Usually it is 100kHz for Europe and 200kHz for the US

Sensitivity – Sensitivity mode of the input RF signal. The Local mode is recommended in case the tool used is close to the transmitter sites. It will enable 6 dB attenuation of the RF input stage. The DX mode is intended in case when weak signal must be received and analyzed. Using this mode will disable any input attenuation of the RF input.

Search Stop Level – Tuner sensitivity threshold in Auto Search Mode

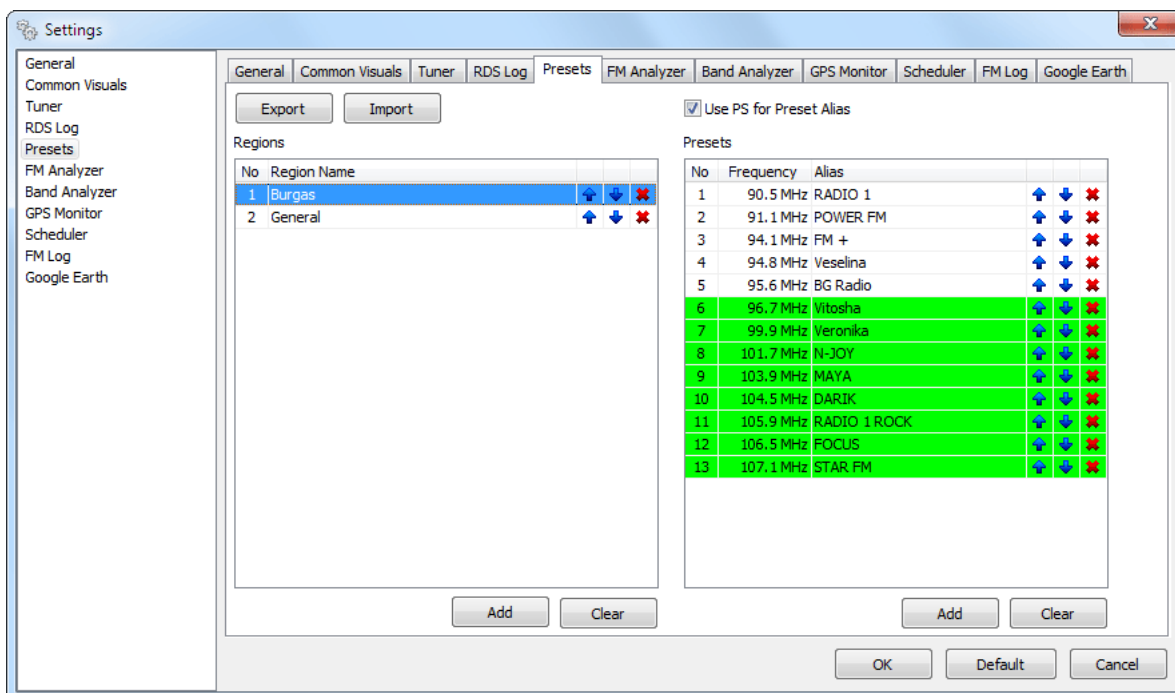
Antenna - If known, Antenna Factor and/or External Attenuator could be specified here.

ATTENTION: These are not hardware properties of Band Scanner and will adjust only final readings.

Validity - Low Level Detect Time is minimum required time to announce RF Level for High or Low according to Low Level Threshold. Buffering Time gives hardware time to smooth after switching over.

NOTE: Some of the tuner settings are uninfluential when the Band Scanner Pro is used with MPX/RDS input signals.

MEMORY PRESETS



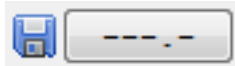
Using this feature you can assign easy to access memory presets (see “FM Tuner, Modes and Presets” on page 30)[15,16,17,18]. Frequencies assigned here, correspond directly to the quick preset buttons situated along with the rest of the tuner controls. Intended to serve as a quick access to favorite stations, preset button needs no more than a click. Presets can be assigned from here as well as from Quick Save buttons. Saving and Recalling is very easy which explains why they are “Quick Presets”.

Here is an example:

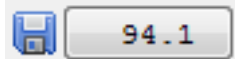
1. Tune to desired station



2. Press one of the Save Preset buttons



3. Station is saved and Recall button (right next to pressed Save button) is changed immediately

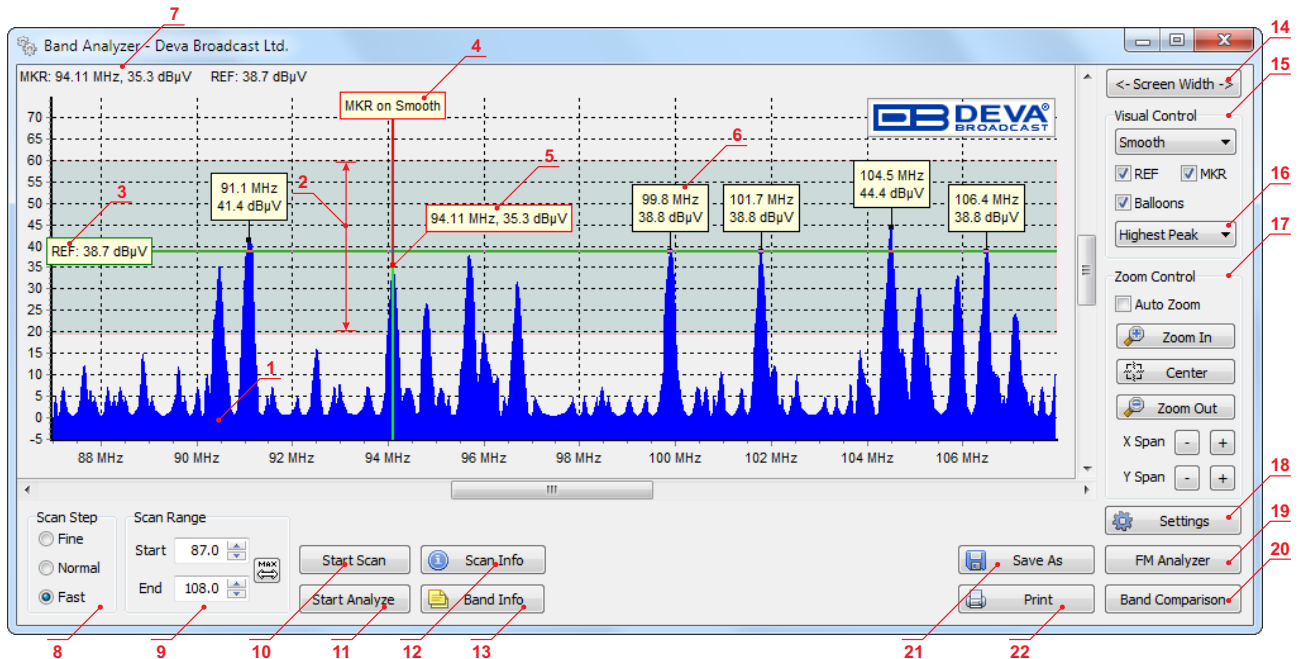


4. To recall saved station, simply press Recall button which holds the frequency of the desired station.

Additionally a Region selector is available, while station frequencies may differ from place to place.

First 5 frequencies will be arranged under fast recall buttons. The rest (which are colored in green) will be placed under Recall List button.

FM Band Spectrum Analyzer



1. FM Band Spectrum. The horizontal scale shows the frequencies. The vertical their measured levels.

2. Sensitivity zone. This is the zone where the tuner is under seeking mode. (see “FM Tuner Settings” on page 31)

3. Reference Level Marker. (see “Band Analyze” on page 36)

4. Marker. By moving Marker along the Band Spectrum displays corresponding level for the frequency under it. (see also “Band Info Table”)

5. Marker Cross-point - shows corresponding level under Marker.

6. Peak Balloon - Holds information about peak. (see “Band Analyze” on page 36)

7. Information for current Markers - MKR - frequency and corresponding level, REF - chosen reference level

8. Band Scanning mode. The software provides three different types of Band Scan:

- *Fine* – Scanning mode with fine frequency resolution;
- *Normal* – mode with satisfying resolution;
- *Fast* – mode for quick scanning with maximum frequency step.

The selected scanning mode defines the scan speed vs. scan details.

9. Scan Range - Allows to customize band scanning by setting in and out frequency of the band.

10. Button for **starting scanning process**. It changes itself to “Stop Scan” button and allows to stop the process at any time. Otherwise the scanning ends at the end of the band. (See [9], “Band Analyzer Settings”)

11. Button for **starting analyzing process**. Inactive if the scanning is not performed. The button changes itself to “Stop Analyze” and allows to stop the process at any time.

12. Scan Info - show balloon with all parameters applied on last scan: Scan Date and Time, Scan Range, Scan Step, Tuner Sensitivity, Extrenal Attenuator, Antenna Factor, Tuner Deemphasis.

13. Band Info - Button for bringing up the information collected from Band Analyze (see “Band Info Table” on page 38)

14. Screen Width button will expand the width of the form to match the width of the screen.

15. Appearance buttons (see “Band Analyzer Settings” on page 35)

16. Peak Find Method Selector

17. Zoom Controls.

18. Settings. ([see “Band Analyzer Settings” on page 35](#))

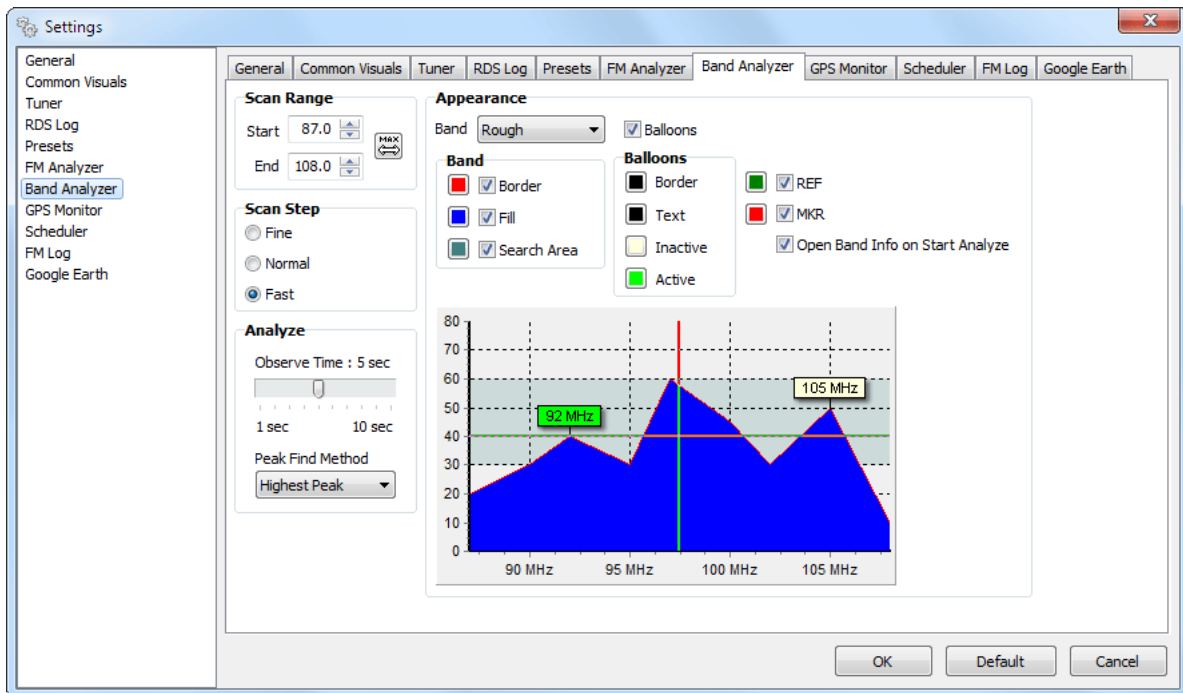
19. Button for fast recall of the **FM Analyzer** Tool. ([see “FM Analyzer” on page 42](#))

20. Button for fast recall of the **Band Comparison** Tool. ([see “Band Comparison” on page 40](#))

21. Button for **Saving** the current graphic. ([see “Band Analyzer Results Saving” on page 39](#))

22. Button for **Printing** the current graphic. ([see “Print Capabilities” on page 74](#))

BAND ANALYZER SETTINGS



Scan Range – Settings for Range of the Scanning Process.

Max - defines full band - 87.0 - 108.0 MHz.

Scan Step - Band Scanning Mode (See [8])

Analyze Observe Time - Defines observation time for each peak (station) before switching to next frequency in Analyze Process.

Analyze Peak Find Method - Defines the method used for finding peaks. (see [“Peak Find Methods”](#) on page 37)

Smooth - Smooths the Band Spectrum and removes jagged parts.

Show Balloons - Show/Hide balloons above peaks.

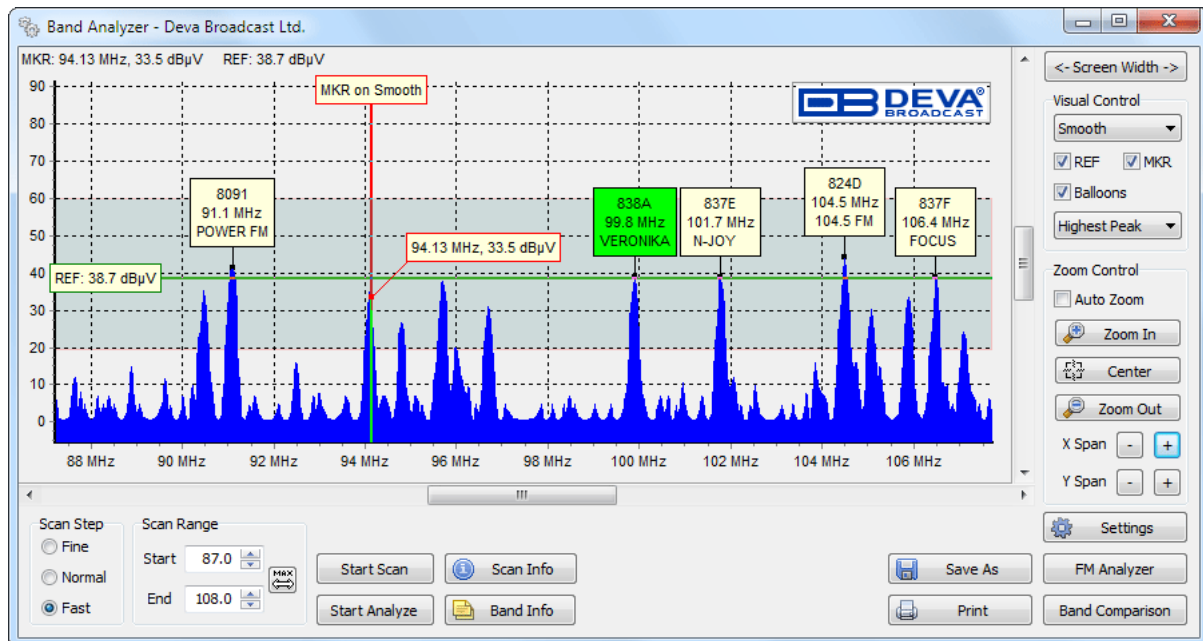
REF - Show/Hide Reference Level Marker

MKR - Show/Hide Frequency Marker

Open Band Info on Start Analyze - If checked automatically opens Band Info Table when Analyze process is started. (see [“Band Info Table”](#) on page 38)

Band, Balloons - Settings for better visual customization.

BAND ANALYZE



“BAND ANALYZE” - WHAT IS IT ALL ABOUT?

First step of Analyze Process is defining the “zone for analyze”. Selecting the reference level (See [3]) defines the bottom of the zone. Top is defined by the maximum measured level. Left and Right edges of the zone are defined by the scanned range (See [9]).

Next, after the zone is defined all the peaks within are located (see “Peak Find Methods” on page 37) and Analyzing Process may start. Before actual analyzing only frequency for each peak is known (and shown above), which defines list of frequencies to be observed/analyzed.

By pressing the Start Analyze button Analyze process is started. Every peak is analyzed for a period of few seconds (“Band Analyzer Settings” - Observe Time) and report is generated for frequency and RDS data (if any available - PI/CALL and PS are shown).

The report from the Analyze Process is visible as “Balloons” above every analyzed peak. More detailed information can be found under the Band Info Table.

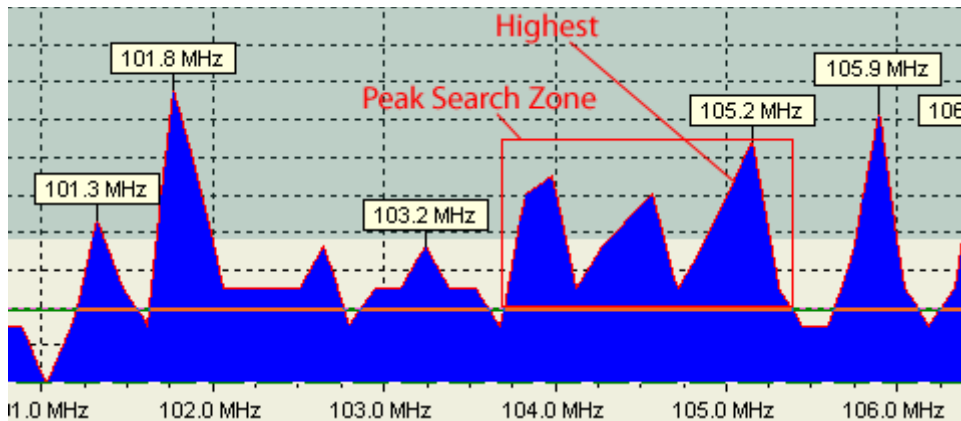
The Analyze Process can be stopped at any time.

Right after the analyzing is finished/stopped, the tuner retunes to the frequency before the start of Analyze Process.

PEAK FIND METHODS

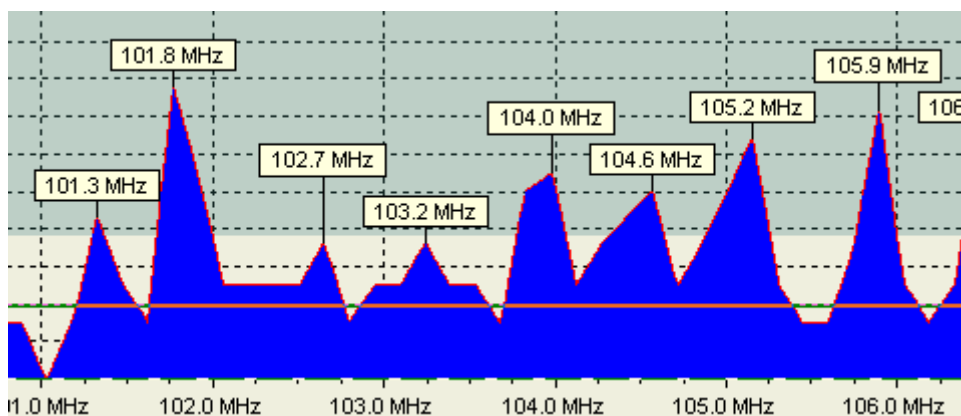
Highest Peak

Only highest peak within defined zone is used, the rest are ignored.



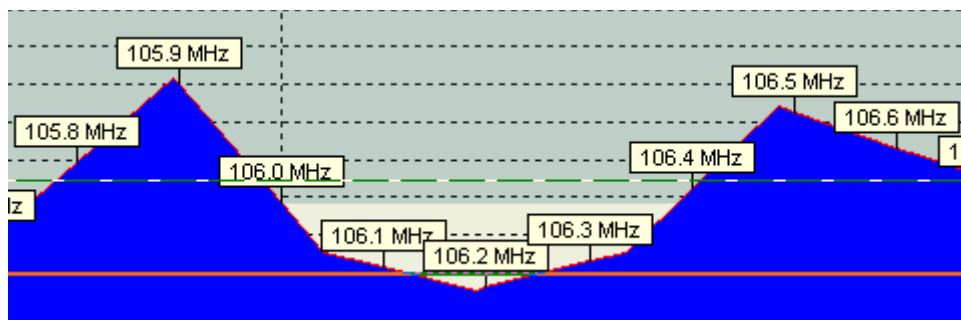
All Peaks

All peaks within defined zone are used.



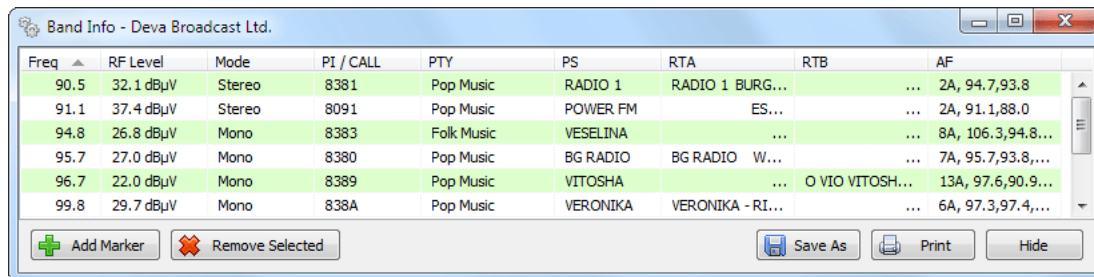
Every 100 kHz

Peak is placed at every 100 kHz, regardless of the selected Reference level



ATTENTION: Analyzing process may become very prolonged, considering peak count multiplied by observation time ("[Band Analyzer Settings](#)" - Observe Time).

BAND INFO TABLE



Freq	RF Level	Mode	PI / CALL	PTY	PS	RTA	RTB	AF
90.5	32.1 dBuV	Stereo	8381	Pop Music	RADIO 1	RADIO 1 BURG...	...	2A, 94.7,93.8
91.1	37.4 dBuV	Stereo	8091	Pop Music	POWER FM	ES...	...	2A, 91.1,88.0
94.8	26.8 dBuV	Mono	8383	Folk Music	VESELINA	8A, 106.3,94.8...
95.7	27.0 dBuV	Mono	8380	Pop Music	BG RADIO	W...	...	7A, 95.7,93.8,...
96.7	22.0 dBuV	Mono	8389	Pop Music	VITOSHA	...	O VIO VITOSH...	13A, 97.6,90.9...
99.8	29.7 dBuV	Mono	838A	Pop Music	VERONIKA	VERONIKA - RI...	...	6A, 97.3,97.4,...

Buttons: Add Marker, Remove Selected, Save As, Print, Hide

Band Info Table represents an additional information from the Analyze of the frequency band.

Besides frequency, PI/CALL, PTY and PS, are shown station mode (stereo or mono), RF Level, Radio Text A&B and AF List if during the period of peak analyze there were enough RDS data to extract AFs.

By using the button Add Marker it is possible to add other frequencies. The desired frequency is selected by the Marker (See [4]).

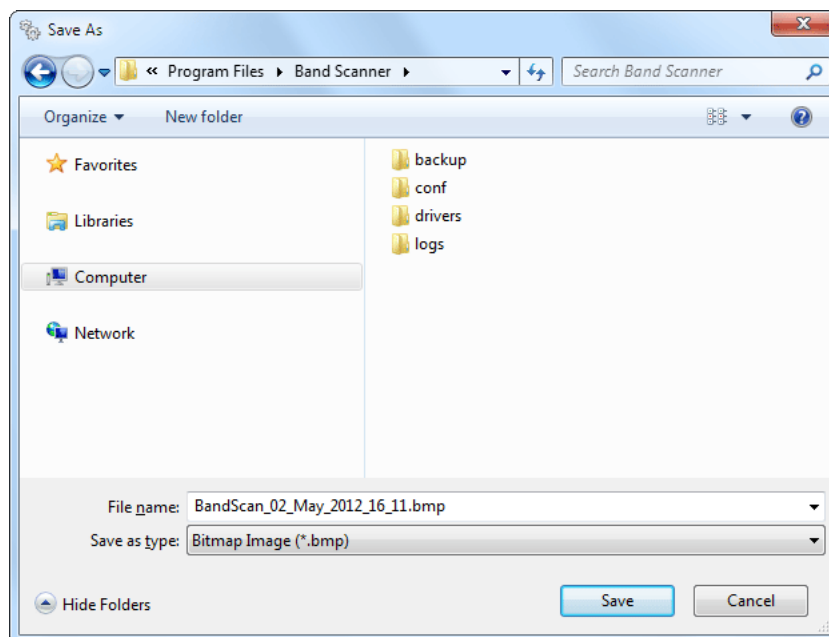
The button Remove Selected will erase the selected entry from the table.

NOTE: Adding or Removing frequencies manually is irrelevant to analyzing process.

Band Info Table could be Saved As CSV (Comma Delimited) format (see “General Settings” on page 28) and can be opened and used with Microsoft Excel or any CSV-compatible software.

In case of a double click with the mouse on some of the rows in the table the Band Scanner Pro switches in Real-time Watching of the corresponding frequency. (see “Band Analyzer Extras” on page 41)

BAND ANALYZER RESULTS SAVING



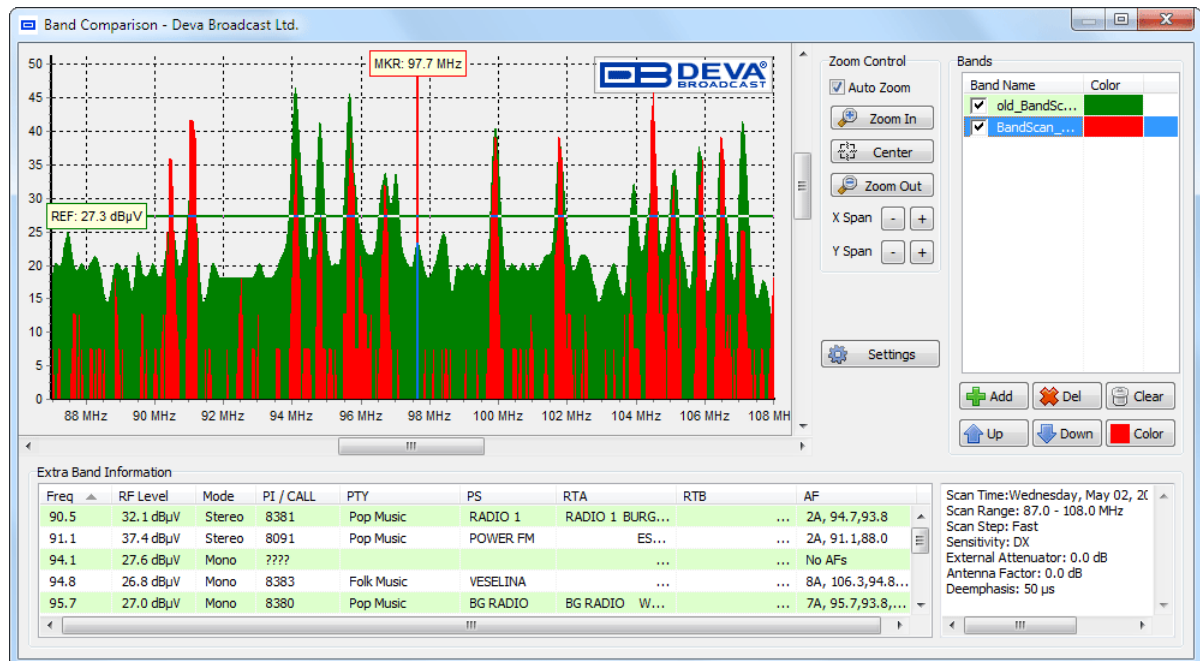
Select the desired folder. Write new file name, or leave the default one which contains current date and time.

Select file type from the “Save as type” drop-down. When you press the Save button the file representing the current graphic from Band Analyzer will be saved into the selected folder.

In addition Band Spectrum could be saved as proprietary format BND, compatible with Band Comparison tool (see [“Band Comparison”](#) on page 40). BND format will hold information from Band Info Table (if any exists) along with spectrum data.

NOTE: Possible Graphical file types are: JPG, BMP, PNG, WMF and EMF.

BAND COMPARISON



The main purpose of this tool is to provide easy way for visual comparison between different spectrum plots. The tool utilizes BND files, which are saved previously from Band Analyzer (see “[Band Analyzer Results Saving](#)” on page 39). The tool overlays different spectrums but is indifferent about comparison itself, which is granted entirely to user.

To Add spectrum use ‘**Add**’ button. Upon addition each spectrum is associated with random color.

To Remove spectrum from list, select it from list and press ‘**Del**’ button.

For temporary show/hide use check-boxes in front of each spectrum.

Different spectrums can be colored for visual distinguishing by selecting appropriate band from list and click on ‘**Color**’ button.

To Remove all spectrums from list press ‘**Clear**’ button.

To rearrange spectrums use ‘**Up**’ and ‘**Down**’ buttons.

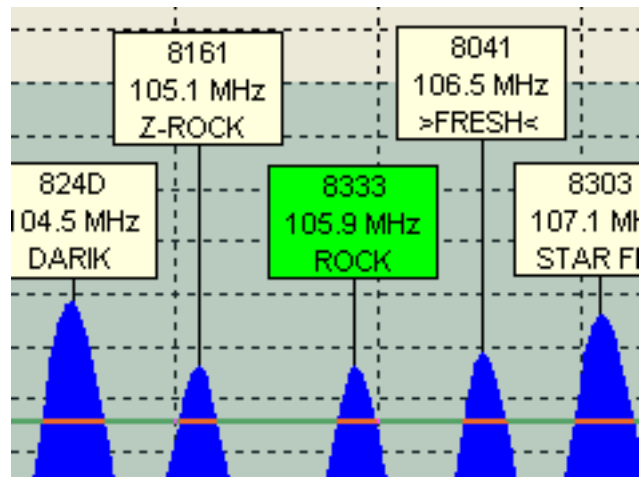
Extra Band Information will be filled with conditions related to each spectrum, as well as supplementary info from Band Analysis. (see “[Band Info Table](#)” on page 38)

BAND ANALYZER EXTRAS

The Band Analyzer provides the user with the opportunity to watch in real-time every selected channel. Selecting the channel happens by double clicking over the peak from the Band Spectrum or by double clicking on any station from the Band Info Table. If the Reference Level line does not cross the selected peak, no selection will occur.

After selecting the station the tuner will automatically set the peak frequency and will enable the real-time watching of the channel. All the incoming data will appear in the Band Info Table and in the Balloon over the analyzed / watched channel. The Balloon color will change to green (customizable under [“Band Analyzer Settings”](#)) which indicates the currently selected channel.

Balloons are automatically rearranged vertically if some overlapping occurs.



FM Analyzer

The Band Scanner Pro has MPX, PILOT & RDS deviation meters built-in. It allows to measure and display the RF Level, MPX deviation, Left & Right Audio Levels, RDS and Pilot injection levels.

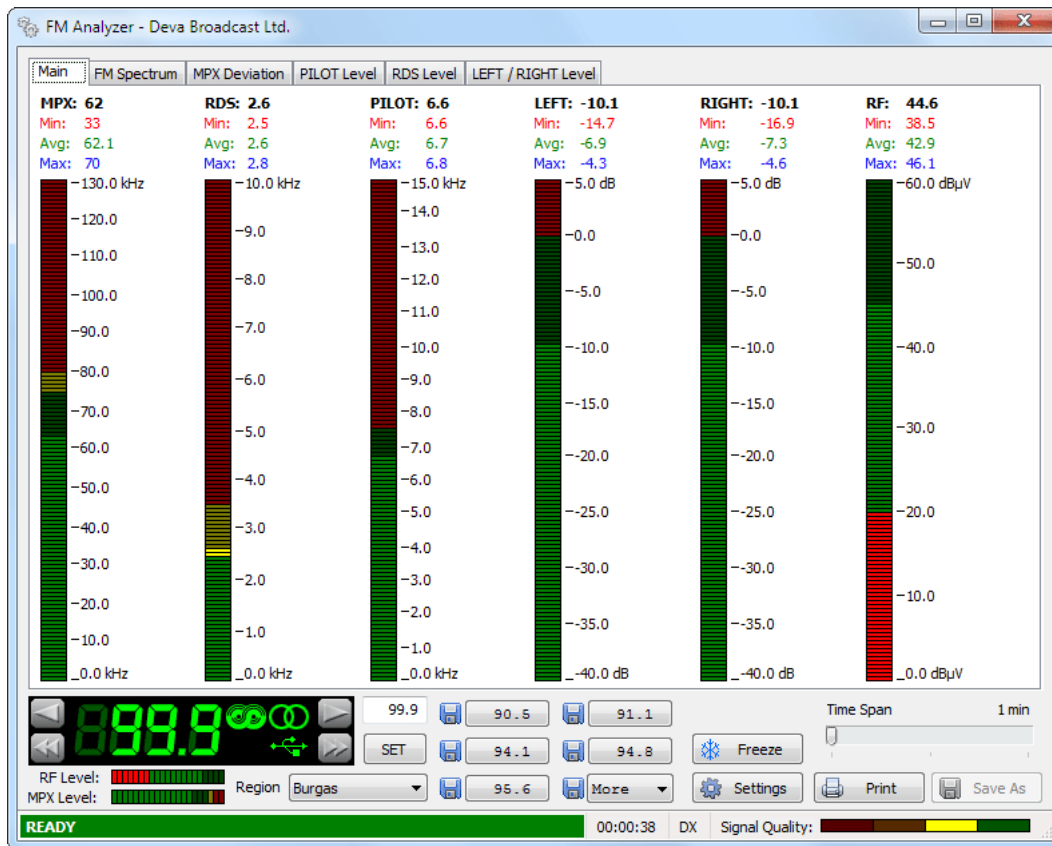
INTEGRATION DEFINED

“Peak Integration” is a euphemistic reference to the practice of allowing brief overdeviations of the FM carrier to sneak by unnoticed. In the case of the Band Scanner, non-repetitive modulation peaks lasting less than a predetermined period will not be displayed on the CARRIER MODULATION Time Graph display. Broadcasting regulations, including those of the FCC in the US, are often a bit vague on the subject of peak integration. Nearly all Modulation Monitors include some provision for ignoring exceedingly fast program peaks, sometimes called “peaks of infrequent occurrence” or other similarly tenuous term. Certainly, non-repetitive overshoots that do not materially increase the broadcaster’s occupied bandwidth, and thus pose no threat of interference to an adjacent-channel signal, may legitimately be ignored in a measurement of total carrier deviation. But by allowing peaks resulting from, and directly related to, the dynamics of the program signal to “slide on by”, the broadcaster is courting the wrath of his appropriate regulatory agency.

US FCC MEASUREMENT METHOD

One reliable guideline in determining just how far you can go with respect to total carrier modulation is to be aware of how at least one government authority monitors a broadcaster’s signal. As far as we have been able to determine, the United States FCC does not use a commercial Modulation Monitor with a metered readout. Instead they connect an oscilloscope to the composite baseband output of a wideband FM receiver and look for deviations beyond a predetermined peak-to-peak amplitude. As divulged by one Field Engineer, the FCC is not looking for the occasional overshoot, but for consistent and flagrant overmodulation, which is invariably noticed and complained about before the station is flagged for scrutiny.

MAIN SCREEN



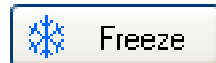
This screen shows all mandatory parameters represented as LED readings.

Above every LED indicator are shown four values. First is the current measured value, followed by its minimum peak, average and maximum peak values for the period since last frequency change.

RADIO section have the same functionality as RADIO section from main program screen (see [“FM Tuner, Modes and Presets”](#) on page 30)

“Settings” button is described in FM Analyzer Settings section.

“Freeze” is a toggle button with two states:



Freeze

- freezes all screen readings, until UnFreeze



UnFreeze

- unfreezes all screen readings

NOTE: Freeze makes motionless only visualisation, measurements are active in background.





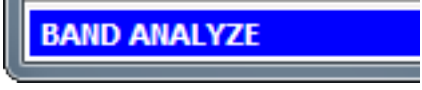
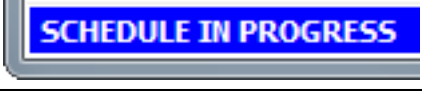


“Time Span” defines time slice that will be represented in every graph.

“Print” button will open the print dialog for printing allowing to print desired graphic (see [“Print Capabilities”](#) on page 74)

“Save” button will save the current graphic as picture. Possible Graphical file types are: JPG, BMP, PNG, WMF and EMF.

NOTE: Additionally the FM Spectrum could be saved in CSV format.

At the bottom is located the Status Line, showing information about the current status.

Status	Description
	RF Level is above Low Level Threshold and has become stable.
	RF Level is below Low Level Threshold, thus all the readings are frozen because of the bad reception.
	Waiting for device to become stable.
	Band Scan process is underway.
	Band Analyze process is underway.
	Schedule process is underway.
	All screen readings are freezed
	Device is disconnected from PC.

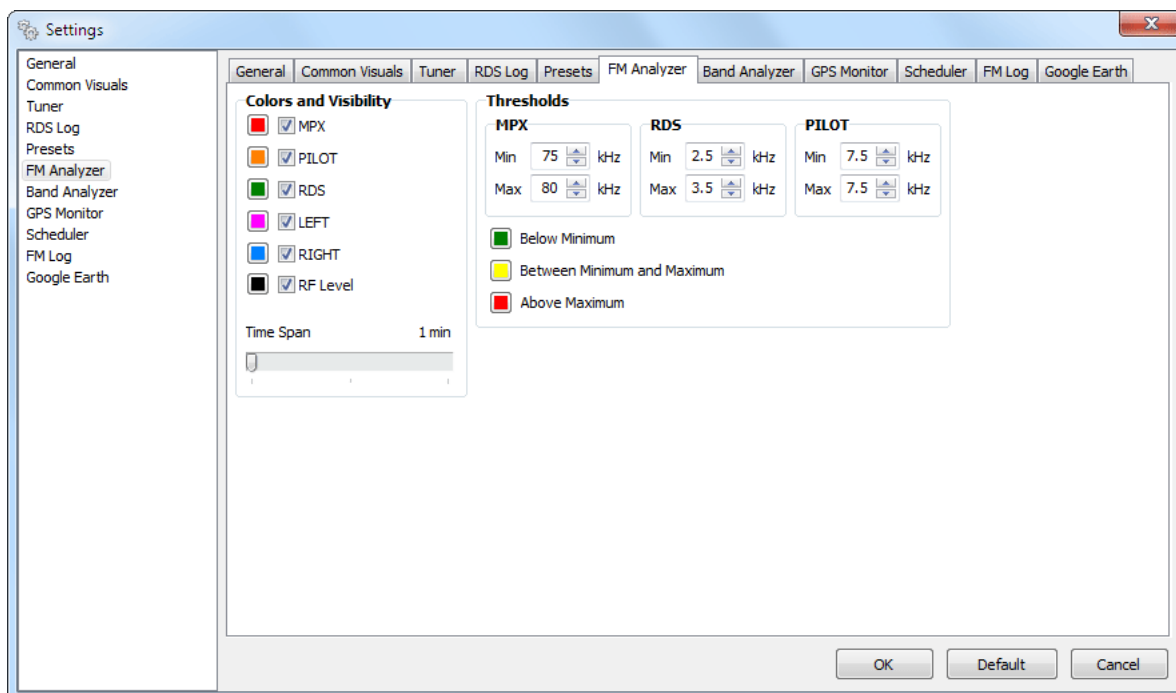
Upon changing working frequency, FM Analyzer switches to BUFFERING state and clears all collected data.

Next at the Status Line is elapsed time since last frequency change.

Next is displayed Sensitivity setting - DX or Local.

Signal Quality indicator shows discrete representation of current signal quality.

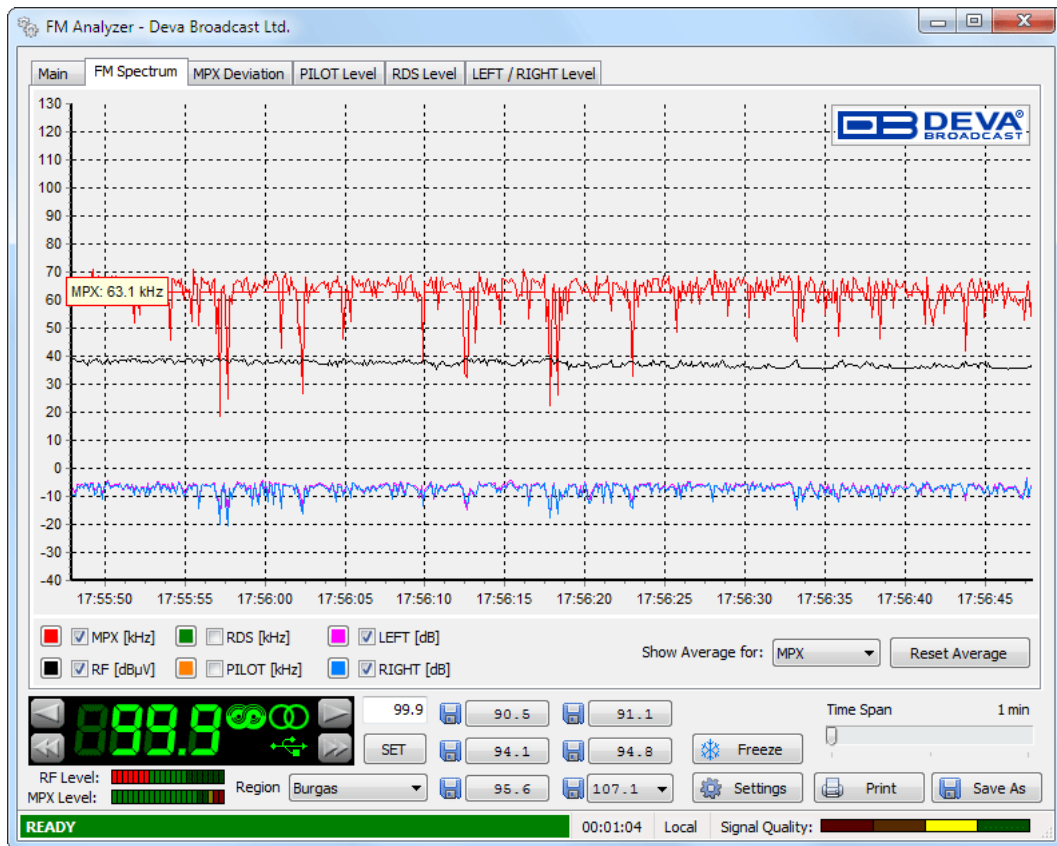
FM ANALYZER SETTINGS



Colors and Visibility - every signal represented on FM graphics could be assigned individual color. Visibility has effect only on FM Spectrum.

Thresholds - MPX, RDS and PILOT signal have minimum and maximum threshold levels, which affects their graphical representation on deviation graphics, as well on LED indicators. Below, Between and Above areas are close related to the threshold levels and their color representation could be changed and seen on deviation graphics and LED indicators as well.

FM SPECTRUM



This screen represents all mandatory parameters over the selected time slice.

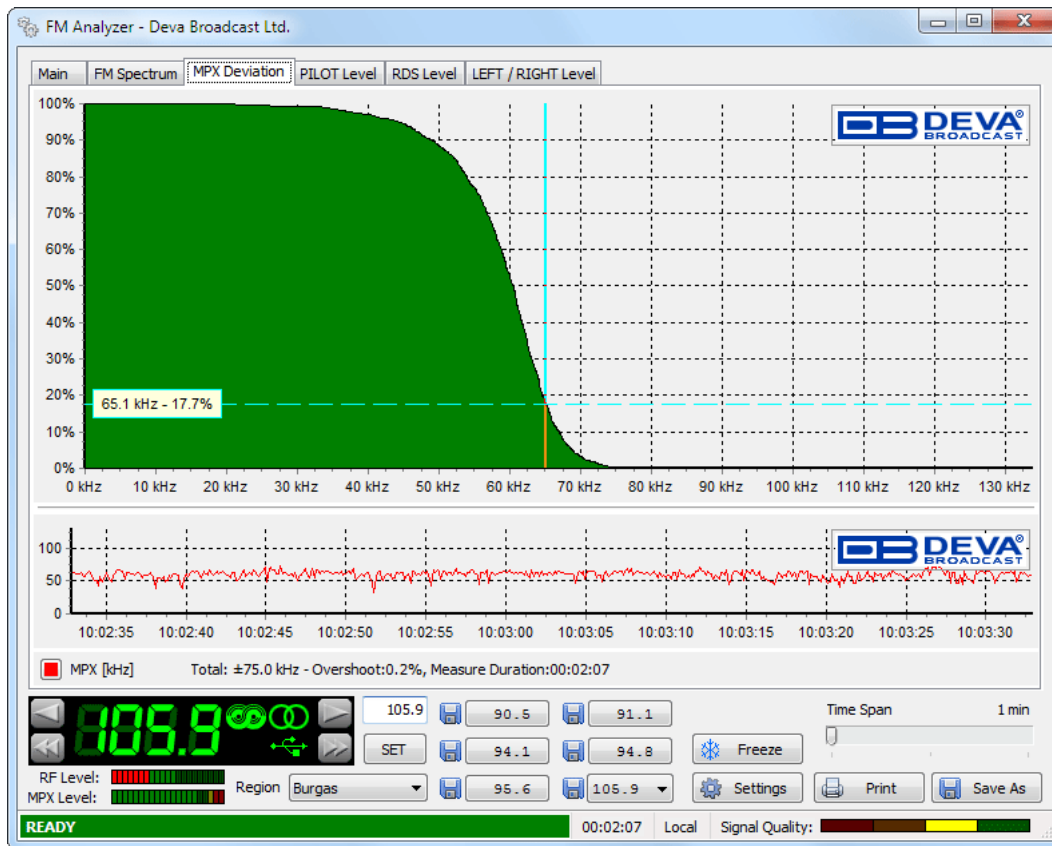
Every parameter has its own color representation and measurement units, which are visible below the graph. Colors can be changed upon clicking on square button in front of parameter's name. Units are tuner-dependent i.e. when in RDS mode - MPX, RDS and PILOT reading are in kHz, RBDS mode - %. LEFT and RIGHT are always shown in dB. RF Level is always shown in dBμV.

Parameters can be visible or hidden by clicking on corresponding check-box.

Average value will be shown upon selecting desired parameter from drop-down box next to "Show Average for". Average value is calculated from all measured parameter's values, until changing the Tuner's frequency.

"Reset Average" button resets average counters. Usable, when unexpected signal fluctuation occurs.

MPX DEVIATION



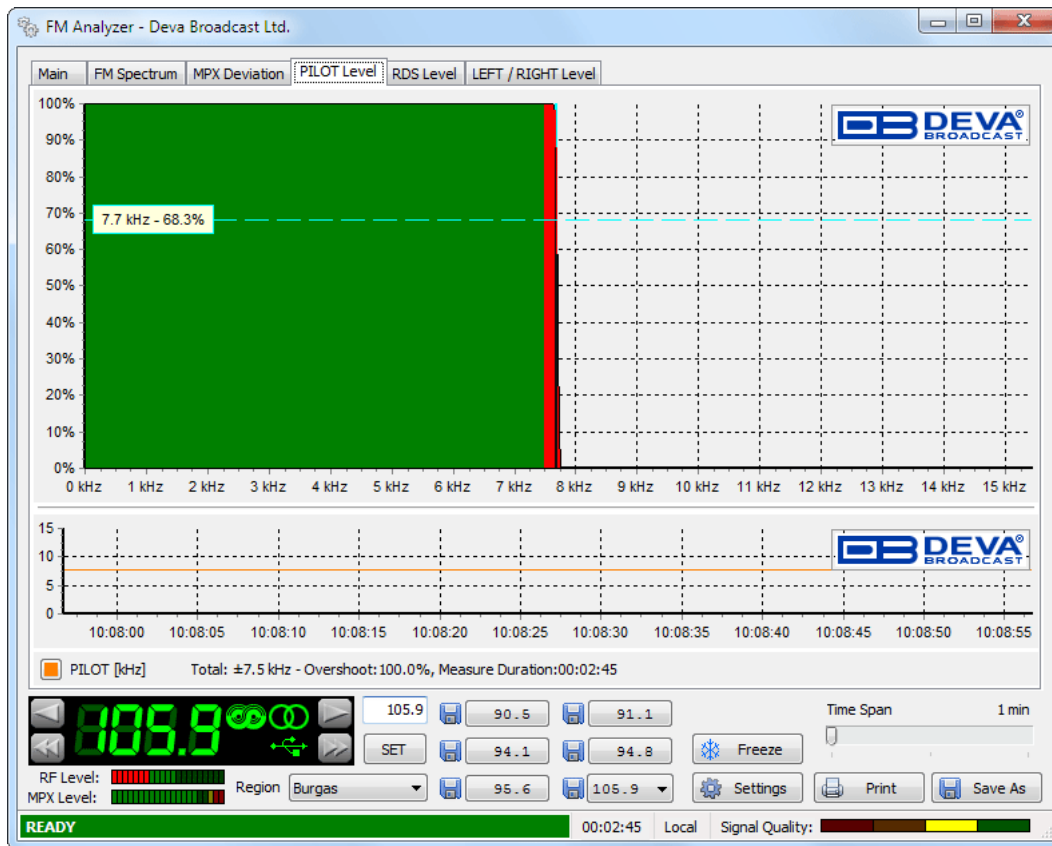
This screen represents MPX Deviation.

The graphic above represents MPX Deviation overshoot (in percent) over time.

Standard overshoot is measured at 75 kHz and is indicated below the graphic. User-defined frequency can be selected by moving vertical marker along the horizontal scale. Overshoot will be indicated at the cross-point with the horizontal dotted line.

The graphic below represents MPX over the selected time slice.

PILOT LEVEL



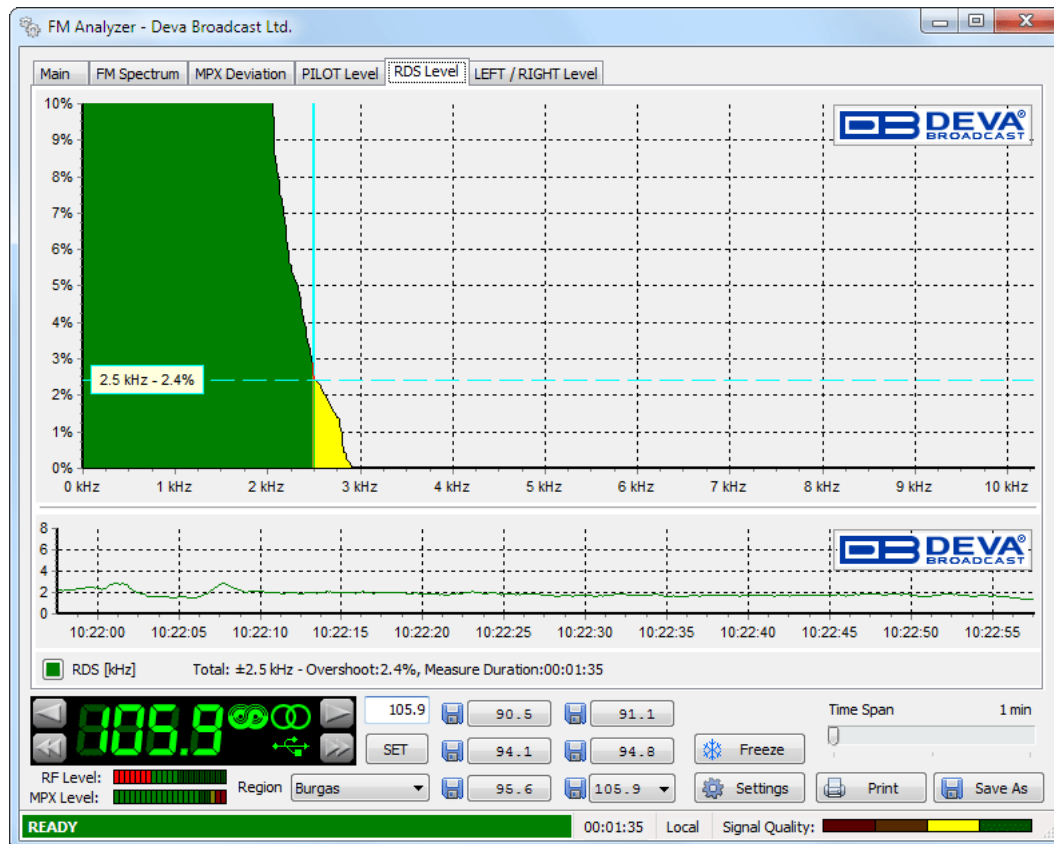
This screen represents PILOT Level.

The graphic above represents PILOT overshoot (in percent) over time.

Standard overshoot is measured at 7.5 kHz and is indicated below the graphic. User-defined frequency can be selected by moving vertical marker along the horizontal scale. Overshoot will be indicated at the cross-point with the horizontal dotted line.

The graphic below represents PILOT Level over the selected time slice.

RDS LEVEL



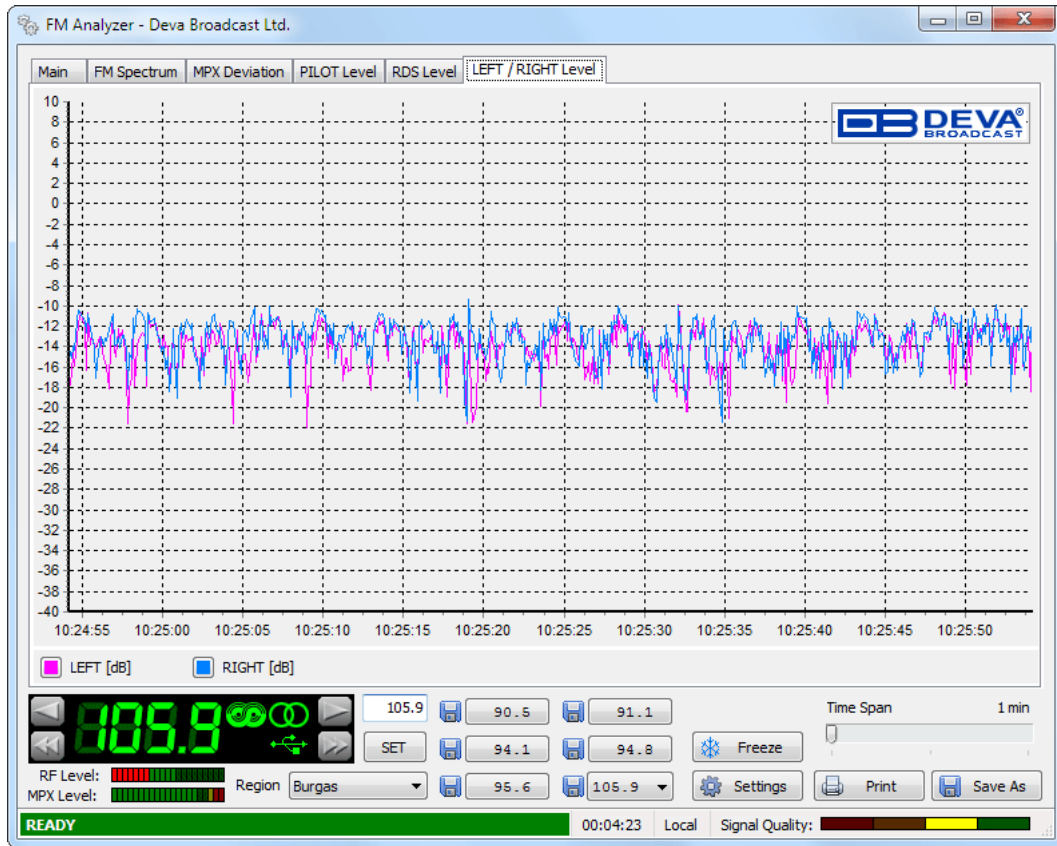
This screen represents RDS Level.

The graphic above represents RDS overshoot (in percent) over time.

Standard overshoot is measured between 2.5 and 3.5 kHz and is indicated below the graphic. User-defined frequency can be selected by moving vertical marker along the horizontal scale. Overshoot will be indicated at the cross-point with the horizontal dotted line.

The graphic below represents RDS Level over the selected time slice.

LEFT & RIGHT LEVEL



This represents LEFT and RIGHT Audio Levels over the selected time slice.

RDS Data and Detailed RDS Group's Analyzer

SECTION "MAIN" WITH ALL MANDATORY RDS FUNCTIONS

In this section the Band Scanner Software visualizes the main RDS features like PS, Radio Texts, PI, PTY, MS, TP, TA, DI and Alternative Frequency Table giving information about the AF method used.

Main 0 AB 1 AB 2 AB 3 AB 4 AB 5 AB 6 AB 7 AB 8 AB TMC 9 AB 10 AB 11 AB 12 AB 13 AB 14 AB 15 AB RT+

PS PI PTY MS AF Total: ??
AF Method: ??

RTA

RTB

TP TA DI

Date ??

Time ??

DEVA
BROADCAST

PS – This is the label of the program service consisting of not more than eight alphanumeric characters, which is displayed by RDS receivers in order to inform the listener what program service is being broadcast by the station to which the receiver is tuned. An example for a name is “Radio 21”.

PI - This information consists of a code enabling the receiver to distinguish between countries, areas in which the same program is transmitted, and the identification of the program itself. The code is not intended for direct display and is assigned to each individual radio program, to enable it to be distinguished from all other programs. One important application of this information would be to enable the receiver to search automatically for an alternative frequency in case of bad reception of the program to which the receiver is tuned; the criteria for the change-over to the new frequency would be the presence of better signal having the same Program Identification code.

PTY - Program TYpe codes - This is an identification number to be transmitted with each program item and which is intended to specify the current Program Type (detailed description follows in Appendix A and B). This code could be used for search tuning. The code will, moreover, enable suitable receivers and recorders to be pre-set to respond only to program items of the desired type.

Music/Speech (M/S) switch code.

This is a 1-bit code. A “0” indicates that speech, at present, is being broadcast and a “1” indicates that music, at present, is being broadcast. When the broadcaster is not using this facility the bit value will be set at “1”.

Use of the **TP** and **TA** features (Type 0, 15B and 14 groups).

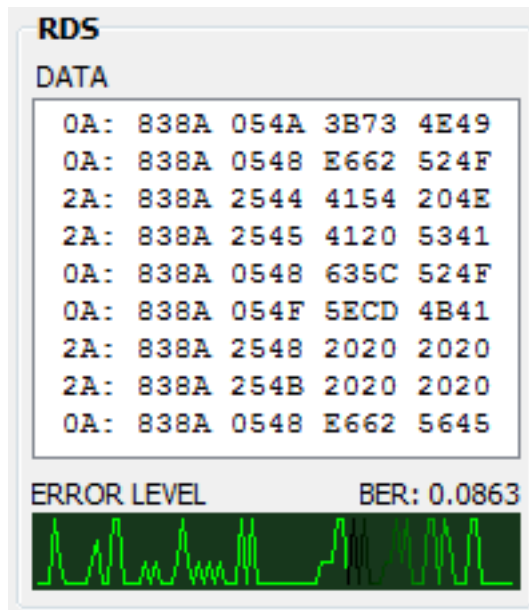
For the tuned program service, the code TP=0 in all groups and TA=1 in type 0 and 15B groups indicates that this program broadcasts EON information which cross-references at least to one program service which carries traffic information. RDS receivers which implement the EON feature may use this code to signify that the listener can listen to the tuned program service and nevertheless receive traffic messages from another program service. RDS receivers which do not implement the EON feature must ignore this code. Program services which use the code TP=0, TA=1 must broadcast type 14 B groups (at the appropriate times) relating to at least one program service which carries traffic information, and has the flag TP=1. The TA flag within variant 13 of a type 14A group is used to indicate that the cross-referenced service is currently carrying a traffic announcement. This indication is intended for information only (e.g. for monitoring by broadcasters) and must not be used to initiate a switch even if traffic announcements are desired by the listener. A switch to the cross-referenced traffic announcement should only be made when a TA=1 flag is detected in a type 14B group.

CT – Clock Time and date

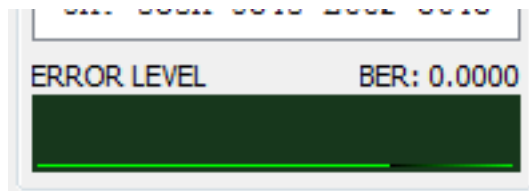
Time and date codes should use Coordinated Universal Time (UTC) and Modified Julian Day (MJD). If MJD = 0 the receiver should not be updated. The listener, however, will not use this information directly and the conversion to local time and date will be made in the receiver's circuitry. CT is used as time stamp by various RDS applications and thus it must be accurate.

RAW RDS DATA STREAM

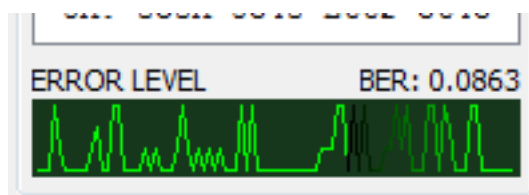
This section contains data about the RDS stream, in case the incoming stream carry RDS data.



The **ERROR LEVEL** indicator shows the Stream's quality. In case of 100% errors free stream the indicator will draw flat line like this:



In case the stream is coming with errors, the line will indicate the error's level like this:

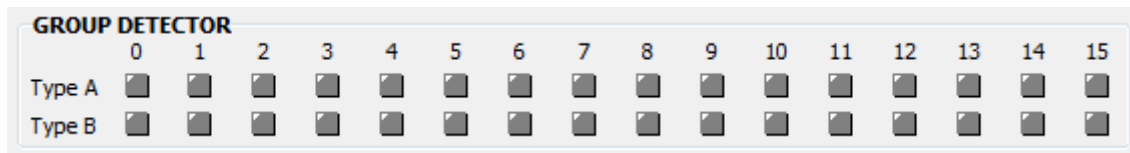


In the **DATA** field the last 9 decoded groups appear in raw format.

BER (Bit to Error Ratio) is the ratio between all the valid and non valid RDS data. In case the RDS is coming with 100% valid data stream, the BER indicator will measure 0. If some errors are detected, the BER reading may rise.

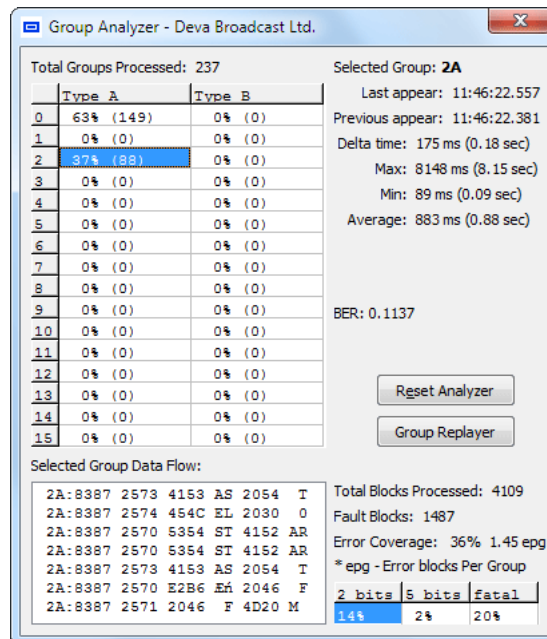
GROUP DETECTOR

The **Group Detector** function is located in the center of the screen for immediate reading of the existing groups. When group presence is detected, corresponding LED illuminates in green.



Using this feature the user will have information about groups being transmitted and their appropriate frequency. In case more information is required, it can be found in the tabs where all the information about the selected group is analyzed or within **Group Analyzer**.

GROUP ANALYZER



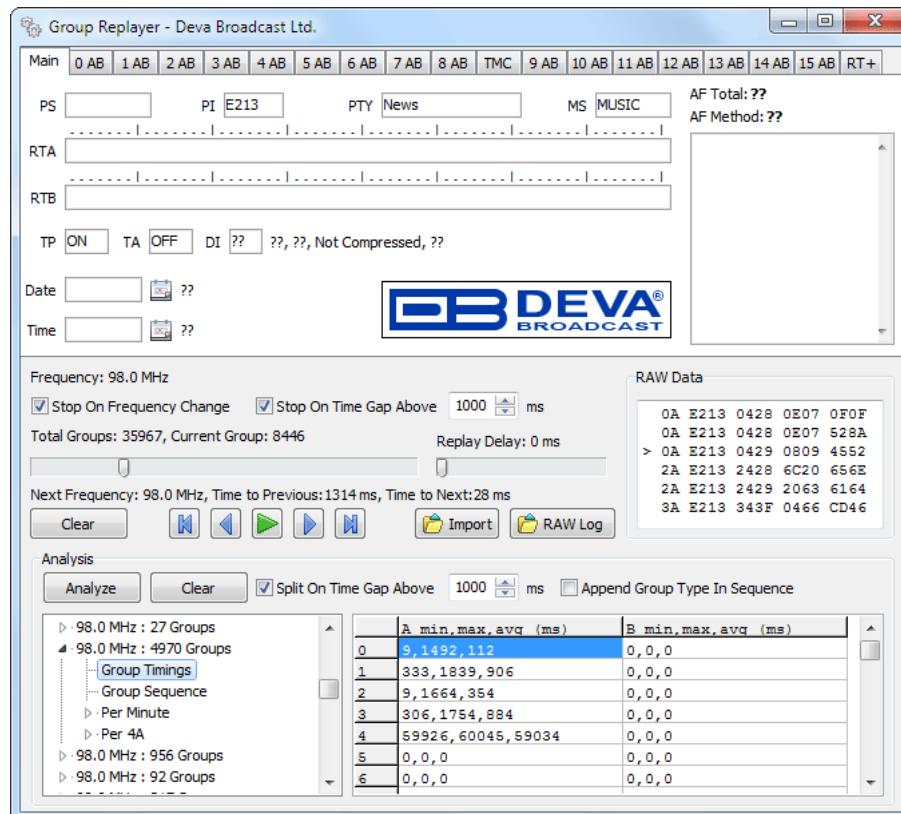
This window gives the user statistical analyze of the incoming RDS/RBDS data stream. Detailed report for the groups' quantity and ratio is included. Each group timing presence is reported in a separate table. The number of the valid or non-valid blocks processed is contained in this screen.

The refreshing of the statistical data depends on the selected group. The time of the last showing of the group, and time differences between any groups appearing is calculated. The average time of group appearing is also displayed.

The **"Reset Analyzer"** button resets all of the buffered data and starts all over. Changing tuned frequency also resets Group Analyzer.

The **"Group Replayer"** button will open tool for more sophisticated group analysis. ([see "Group Replayer" on page 56](#))

GROUP REPLAYER



Group Replayer tool utilizes RAW RDS data and Replays it. Existing data can be used from RAW Log as well from previously exported GRP files (see “Log Export” on page 80).

Top half of the Replayer is identical to Main Program View and acts in same manner, i.e. RDS data is interpreted in the same way.

First import data using ‘**Import**’ or ‘**RAW Log**’ buttons.

Use Replay buttons to step/run through RDS stream. Playing back and forth have immediate result in upper section. Discontinuance in RDS stream could be sensed in two ways - by frequency switch or by too big time delay.

More sophisticated analysis could be performed by pressing ‘**Analyze**’ button in Analysis section. There entire RDS stream will be divided into several sections according to frequency switch and defined time gap. Each section has its own statistical information represented into right side.

Short description of all groups analyzed

TYPE 0A & 0B GROUPS: BASIC TUNING AND SWITCHING INFORMATION

Type 0A groups are usually transmitted whenever alternative frequencies exist. Type 0B groups without any type 0A groups may be transmitted only when no alternative frequencies exist. There are two methods (A and B) for transmission of alternative frequencies. The PS function is also part from this group. The Program Service name comprises eight characters. It is the primary aid to listeners in program service identification and selection.

Main	0 AB	1 AB	2 AB	3 AB	4 AB	5 AB	6 AB	7 AB	8 AB	TMC	9 AB	10 AB	11 AB	12 AB	13 AB	14 AB	15 AB	RT+
BASIC TUNING AND SWITCHING INFORMATION																		
DI	<input type="text"/>				AF Total: ??				AF Analyzer					Sequence Stream				
	<input type="text"/>				AF Method: ??													
TA	<input type="text"/>				<div></div>				<div></div>				<div></div>					
MS	<input type="text"/>																	
PS	<input type="text"/>																	
Character Code Table: Default																		

The Program Service name is to be used only to identify the station or station program. The PS may be changed as required by the station. Nowadays this feature is used for transmitting artist names, song titles, promos or some kind of advertisement texts.

TYPE 1A & 1B GROUPS: PROGRAM ITEM NUMBER AND SLOW LABELING CODES

Program Item Number, Type 1B group - The Program Item Number is the scheduled broadcast start time and day of month as published by the broadcaster. The day of month is transmitted as a five-bit binary number in the range 1-31. Hours are transmitted as a five-bit binary number in the range 0-23. The spare codes are not used. Minutes are transmitted as a six-bit binary number in the range 0-59. The spare codes are not used.

Main	0 AB	1 AB	2 AB	3 AB	4 AB	5 AB	6 AB	7 AB	8 AB	TMC	9 AB	10 AB	11 AB	12 AB	13 AB	14 AB	15 AB	RT+
------	------	------	------	------	------	------	------	------	------	-----	------	-------	-------	-------	-------	-------	-------	-----

PIN

Day: ??
Hour: ??
Minute: ??
Radio Paging Codes

Slow Labeling Codes

N	Variant Code	Data
0	Paging/Extended Country Code	
1	TMC Identification	
2	Paging Identification	
3	Language Code	
4	Not Assigned	
5	Not Assigned	
6	In-house	
7	EWS Identification	

VC History

Linkage Actuator

The most significant five bits in block 4 which convey the day of the month, if set to zero, indicate that no valid Program Item Number is being transmitted. In this case, if no Radio Paging is implemented, the remaining bits in block 4 are undefined. However, in the case of type 1A groups only, if Enhanced Radio Paging is implemented, the remaining bits carry Service Information.

TYPE 2A & 2B GROUPS: RADIOTEXT

The 4-bit text segment address defines in the current text the position of the text segments contained in the third (version A only) and fourth blocks. Since each text segment in version 2A groups comprises four characters, messages of up to 64 characters in length can be sent using this version. In version 2B groups, each text segment comprises only two characters and therefore when using this version the maximum message length is 32 characters.

Main	0 AB	1 AB	2 AB	3 AB	4 AB	5 AB	6 AB	7 AB	8 AB	TMC	9 AB	10 AB	11 AB	12 AB	13 AB	14 AB	15 AB	RT+
------	------	------	------	------	------	------	------	------	------	-----	------	-------	-------	-------	-------	-------	-------	-----

RADIOTEXT

RTA

RTB

A/B

If a display which has fewer than 64 characters is used to display the radiotext message then memory should be provided in the receiver/decoder so that elements of the message can be displayed sequentially. This may, for example, be done by displaying elements of text one at a time in sequence, or, alternatively by scrolling the displayed characters of the message from right to left.

- An important feature of type 2 groups is the Text A/B flag contained in the second block. Two cases occur:

If the receiver detects a change in the flag (from binary “0” to binary “1” or vice-versa), then the whole radiotext display should be cleared and the newly received radiotext message segments should be written into the display.

- If the receiver detects no change in the flag, then the received text segments or characters should be written into the existing displayed message and those segments or characters for which no update is received should be left unchanged.

When this application is used to transmit a 32-character message, at least three type 2A groups or at least six type 2B groups should be transmitted in every two seconds.

- 59 -

TYPE 3A & 3B GROUPS: APPLICATION IDENTIFICATION FOR OPEN DATA

The type 3A group conveys, to a receiver, information about which Open Data Applications are carried on a particular transmission and in which groups they will be found. The type 3A group comprises three elements:

- Application Group type code used by that application, 16 message bits for the actual ODA and the Applications
- Identification (AID) code. Applications which actively utilize both, type A and B groups, are signaled using two type 3A groups. The Application Group type code indicates the group type used, in the particular transmission, to carry the specified ODA. Two special conditions may be indicated: 00000 - Not carried in associated group; 11111 - Temporary data fault (Encoder status) which means that incoming data to the encoder cannot be transmitted. The AID determines which software handler a receiver needs to use. This supplements information carried in the type 1A group and permits groups specified in this standard for EWS, IH, RP and TMC to be re-allocated when these features are not used. This method of allocating and defining Open Data Applications in an RDS transmission allows the addition and subtraction of ODAs, without constraint or the need to await the publication of new standards. For each group type addressed by the Application Group Type codes of a particular transmission, only one application may be identified as the current user of the channel.

Main	0 AB	1 AB	2 AB	3 AB	4 AB	5 AB	6 AB	7 AB	8 AB	TMC	9 AB	10 AB	11 AB	12 AB	13 AB	14 AB	15 AB	RT+
APPLICATION IDENTIFICATION FOR OPEN DATA																		
Application Group				Message				Application Identification										

- The AID code 0000 (Hex) may be used to indicate that the respective group type is being used for the normal feature specified in this standard. Application Identification codes 0001 to FFFF (Hex) indicate applications as specified in the ODA Directory. The ODA Directory specification associated with a particular AID code defines the use of type A and type B groups as follows:

- type A groups used alone (mode 1.1)
- type B groups used alone (mode 1.2)
- type A groups and type B groups used as alternatives (mode 2)
- type A groups and type B groups used together (mode 3)

It is important to note that the ODA Directory specification must not specify the actual type A and type B groups to be used, since these are assigned in each transmission by the type 3A group. The AID feature indicates that a particular ODA is being carried in a transmission. Each application will have unique requirements for transmission of its respective AID, in terms of repetition rate and timing. These requirements must be detailed in the respective ODA specification. The specification must also detail the AID signaling requirements for such times when an application assumes or loses the use of a group type channel.

TYPE 4A & 4B GROUPS: CLOCK-TIME AND DATE, OPEN DATA APPLICATION


The transmitted clock-time and date shall be accurately set to UTC plus local offset time. Otherwise the transmitted CT codes shall all be set to zero. When this application is used, one type 4A group will be transmitted every minute. The local time is composed of Coordinated Universal Time (UTC) plus local time offset. The local time offset is expressed in multiples of half hours within the range -12h to +12h and is coded as a six-bit binary number. “0” = positive offset (East of zero degree longitude), and “1” = negative offset (West of zero degrees longitude). The information relates to the epoch immediately following the start of the next group. The Clock time group is inserted so that the minute edge will occur within ± 0.1 seconds of the end of the Clock time group.

Main	0 AB	1 AB	2 AB	3 AB	4 AB	5 AB	6 AB	7 AB	8 AB	TMC	9 AB	10 AB	11 AB	12 AB	13 AB	14 AB	15 AB	RT+
------	------	------	------	------	------	------	------	------	------	-----	------	-------	-------	-------	-------	-------	-------	-----

CLOCK-TIME AND DATE


Day Month Year Week Day of Week

Date

 ??

Hour Min. Offset

Time

 ??

ODA

Block 1	Block 3
---------	---------

Minutes are coded as a six-bit binary number in the range 0-59. The spare codes are not used. Hours are coded as five-bit binary number in the range 0-23. The spare codes are not used. The date is expressed in terms of Modified Julian Day and coded as a 17-bit binary number in the range 0-999999. Note that the Modified Julian Day date changes at UTC midnight, not at local midnight. Accurate CT based on UTC plus local time offset must be implemented on the transmission where TMC and/or Radio paging is implemented.

4B groups are usable for Open data ([see “Type 3A & 3B groups” on page 60](#))

TYPE 5A & 5B GROUPS: TRANSPARENT DATA CHANNELS OR ODA

These channels may be used to send alphanumeric characters, or other text (including mosaic graphics), or for transmission of computer programs and similar data not for display. Details of implementation of these last options are to be specified later. The repetition rate of these group types may be chosen to suit the application and the available channel capacity at the time.

Main	0 AB	1 AB	2 AB	3 AB	4 AB	5 AB	6 AB	7 AB	8 AB	TMC	9 AB	10 AB	11 AB	12 AB	13 AB	14 AB	15 AB	RT+
TRANSPARENT DATA CHANNELS OR ODA																		
Channel Number										Transparent Data								
										ODA								
										Block 1				Block 3				

TYPE 6A & 6B GROUPS: IN-HOUSE APPLICATIONS OR ODA

Type 6A groups are used for ODA and IH. In case this group is used for ODA applications see [“Type 3A & 3B groups”](#) description. There are some unreserved bits in these groups. The contents of the unreserved bits in these groups may be defined unilaterally by the operator. Consumer receivers should ignore the in-house information coded in these groups. The repetition rate of these group types may be chosen to suit the application and the available channel capacity at the time.

Main	0 AB	1 AB	2 AB	3 AB	4 AB	5 AB	6 AB	7 AB	8 AB	TMC	9 AB	10 AB	11 AB	12 AB	13 AB	14 AB	15 AB	RT+
IN-HOUSE APPLICATIONS OR ODA																		
Block 1			Block 2						Block 3									

TYPE 7A & 7B GROUPS: RADIO PAGING OR ODA

Type 7A groups are used for Radio Paging or ODA (see “Type 3A & 3B groups” on page 60)

Main	0 AB	1 AB	2 AB	3 AB	4 AB	5 AB	6 AB	7 AB	8 AB	TMC	9 AB	10 AB	11 AB	12 AB	13 AB	14 AB	15 AB	RT+
RADIO PAGING OR ODA																		
Paging										ODA								
A/B		Segm. Addr.				Paging				Block 1			Block 3					

TYPE 8A & 8B GROUPS: TRAFFIC MESSAGE CHANNEL OR ODA

Type 8A groups are used for Traffic Message Channel (TMC); if used for ODA see “[Type 3A & 3B groups](#)” description. This group carries the TMC messages. The specification for TMC, using the so called ALERT C protocol also makes use of type 1A and/or type 3A groups together with 4A groups

Main	0 AB	1 AB	2 AB	3 AB	4 AB	5 AB	6 AB	7 AB	8 AB	TMC	9 AB	10 AB	11 AB	12 AB	13 AB	14 AB	15 AB	RT+
TRAFFIC MESSAGE CHANNEL OR ODA																		
Block 1				Block 2								Block 3						

Main	0 AB	1 AB	2 AB	3 AB	4 AB	5 AB	6 AB	7 AB	8 AB	TMC	9 AB	10 AB	11 AB	12 AB	13 AB	14 AB	15 AB	RT+
<div>System Tuning Data Messages</div> <div> Location Table Number <input type="text"/> Alternative Frequency Indicator <input type="text"/> Message Geographical Scope <input type="text"/> I - International (Inter-Road), N - National, R - Regional, U - Urban Service Identifier <input type="text"/> <div> Basic Mode <input type="text"/> Gap (Groups) <input type="text"/> </div> <div> Enhanced Mode Ta <input type="text"/> Tw <input type="text"/> Td <input type="text"/> </div> </div>																		

Main	0 AB	1 AB	2 AB	3 AB	4 AB	5 AB	6 AB	7 AB	8 AB	TMC	9 AB	10 AB	11 AB	12 AB	13 AB	14 AB	15 AB	RT+
<div>System Tuning Data Messages</div> <div> Provider <input type="text"/> AF: ?? ?? Mapped Freqs: ?? PI ON: LTN/SID/MGS: ?? Variant History <input type="text"/> <div> <input type="text"/> <input type="text"/> <input type="text"/> <input type="text"/> </div> </div>																		

Main	0 AB	1 AB	2 AB	3 AB	4 AB	5 AB	6 AB	7 AB	8 AB	TMC	9 AB	10 AB	11 AB	12 AB	13 AB	14 AB	15 AB	RT+														
<div>System Tuning Data Messages</div> <table border="1"> <thead> <tr> <th>F</th><th>DP/CI</th><th>Diversion</th><th>Direction</th><th>Extent</th><th>Event</th><th>Location</th></tr> </thead> <tbody> <tr><td colspan="7" style="height: 100px;"></td></tr> </tbody> </table>																			F	DP/CI	Diversion	Direction	Extent	Event	Location							
F	DP/CI	Diversion	Direction	Extent	Event	Location																										

TYPE 9A & 9B GROUPS: EMERGENCY WARNING SYSTEMS OR ODA

These groups are transmitted very infrequently, unless an emergency occurs or test transmissions are required. Type 9A group is used for EWS; if used for ODA, see [“Type 3A & 3B groups”](#) description. The ODA may be used only in type B of these groups. Format and application of the bits allocated for EWS messages may be assigned unilaterally by each country. However the ECC feature must be transmitted in type 1A groups when EWS is implemented.

Main	0 AB	1 AB	2 AB	3 AB	4 AB	5 AB	6 AB	7 AB	8 AB	TMC	9 AB	10 AB	11 AB	12 AB	13 AB	14 AB	15 AB	RT+
EMERGENCY WARNING SYSTEMS OR ODA																		
Block 1			Block 2						Block 3									

TYPE 10A & 10B GROUPS: PROGRAM TYPE NAME (10A) AND OPEN DATA (10B)

The type 10A group allows further description of the current Program Type, for example, when using the PTY code 4: SPORT, a PTYN of “Football” may be indicated to give more detail about that program. PTYN must only be used to enhance Program Type information and it must not be used for sequential information. The A/B flag is toggled when a change is made in the PTYN being broadcast. Program Type Name (PTYN) (for display) is transmitted as 8-bit characters as defined in the 8-bit code tables in annex E. Eight characters (including spaces) are allowed for each PTYN and are transmitted as four character segments in each type 10A group. ODA - Type 10B group see [“Type 3A & 3B groups”](#) description.

Main	0 AB	1 AB	2 AB	3 AB	4 AB	5 AB	6 AB	7 AB	8 AB	TMC	9 AB	10 AB	11 AB	12 AB	13 AB	14 AB	15 AB	RT+
------	------	------	------	------	------	------	------	------	------	-----	------	-------	-------	-------	-------	-------	-------	-----

PROGRAM TYPE NAME (PTYN)

PTYN

A/B

ODA

Block 1	Block 3

TYPE 11A & 11B GROUPS: OPEN DATA APPLICATION

Open data - Type 11A and 11B groups ([see “Type 3A & 3B groups” on page 60](#))

Main	0 AB	1 AB	2 AB	3 AB	4 AB	5 AB	6 AB	7 AB	8 AB	TMC	9 AB	10 AB	11 AB	12 AB	13 AB	14 AB	15 AB	RT+
OPEN DATA APPLICATION (ODA)																		
Block 1			Block 2						Block 3									

TYPE 12A & 12B GROUPS: OPEN DATA APPLICATION

Open data - Type 12A and 12B groups ([see “Type 3A & 3B groups” on page 60](#))

Main	0 AB	1 AB	2 AB	3 AB	4 AB	5 AB	6 AB	7 AB	8 AB	TMC	9 AB	10 AB	11 AB	12 AB	13 AB	14 AB	15 AB	RT+
OPEN DATA APPLICATION (ODA)																		
Block 1			Block 2						Block 3									

TYPE 13A & 13B GROUPS: ENHANCED RADIO PAGING OR ODA

The type 13A group is used to transmit the information relative to the network and the paging traffic. Its primary purpose is to provide an efficient tool for increasing the battery life time of the pager. These groups are transmitted once or twice at the beginning of every interval (after the type 4A group at the beginning of each minute or after the first type 1A group at the beginning of each interval).

Main	0 AB	1 AB	2 AB	3 AB	4 AB	5 AB	6 AB	7 AB	8 AB	TMC	9 AB	10 AB	11 AB	12 AB	13 AB	14 AB	15 AB	RT+
ENHANCED RADIO PAGING OR ODA																		
Paging										ODA								
Cycle Selection		Sub Type Code		Interval		Sorting		Address Notification Bits		Block 1			Block 3					

13B groups are usable for Open Data ([see “Type 3A & 3B groups” on page 60](#))

TYPE 15A & 15B GROUPS: FAST BASIC TUNING AND SWITCHING INFORMATION

Encoder manufactures usually eliminate this group type on new equipment. The RDS standard currently has no definition for this group. It is intended that type 15A groups should be inserted where it is desired to speed up acquisition time of the PS name. No alternative frequency information is included in 15A groups, and this group will be used to supplement type 0B groups. If alternate frequencies exist, type 0A will still be required. It is intended that type 15B groups should be inserted where it is desired to increase the repetition rate of the switching information contained in block 2 of type 0 groups without increasing the repetition rate of the other information contained in these groups. No alternative-frequency information or program-service name is included in 15B groups, and this group will be used to supplement rather than to replace type 0A or 0B groups.

Main	0 AB	1 AB	2 AB	3 AB	4 AB	5 AB	6 AB	7 AB	8 AB	TMC	9 AB	10 AB	11 AB	12 AB	13 AB	14 AB	15 AB	RT+
------	------	------	------	------	------	------	------	------	------	-----	------	-------	-------	-------	-------	-------	-------	-----

FAST BASIC TUNING AND SWITCHING INFORMATION

DI

TA

MS

PS

When groups of this type are transmitted, the repetition rate may be chosen to suit the application and the available channel capacity at the time.

RADIOTEXT PLUS (RT+)

RadioText Plus or RT+ is “semantic analogue radio”. It allows the RDS feature RadioText (RT) to be understood by FM RDS receiving terminals. RT+ is based on RDS RT messages and is completely backwards compatible with RT. RT+ has been designed to let the listener (or user) derive additional benefits from the RDS RadioText service. It enables FM RDS receivers to “understand” the RadioText – to recognize designated objects, to make those objects manageable by the user and thus offer the user direct access to specific elements of RadioText messages. Such an element can, for example, be programme-associated metadata such as the Title and the Artist of the currently playing song, or it can be news headlines. This provides the listener with an “mp3-player feeling” while listening to analogue FM radio. The elements can also carry additional service messages or information about the Radio Station such as the telephone number or the web address of the Radio Station’s hotline. These objects, or more accurately RT+ information elements carried in the RDS RadioText (RT) messages, are identified by their location within the RT messages and by the class code of their content type. Once an information element is received and understood, a receiver is able to, for example, store the different RT+ information elements and the listener may then select and request a specific content type from the radio’s memory at an instant in time that suits the listener’s needs. Thus the listener is no longer forced to watch the RT information passing (scrolling) by. Moreover, RT+ offers selected RT message elements to car drivers on a static display, without risk of distracting the attention of the driver. Furthermore, RT+ is well suited for mobile phones with built-in FM receivers: telephone numbers can be directly used to initiate calls, and web addresses can be used to start browsing the web content offered by the radio programme provider.

All additional information necessary for implementing the RT+ service is carried in the RDS group 3A and in an appropriate RDS ODA group.

Main	0 AB	1 AB	2 AB	3 AB	4 AB	5 AB	6 AB	7 AB	8 AB	TMC	9 AB	10 AB	11 AB	12 AB	13 AB	14 AB	15 AB	RT+
------	------	------	------	------	------	------	------	------	------	-----	------	-------	-------	-------	-------	-------	-------	-----

Current

History

CB

SCB

Template Number

RT A/B

Toggle

Run

Tag 1

Class

Content

Start

Length

RT

Tag 2

Class

Content

Start

Length

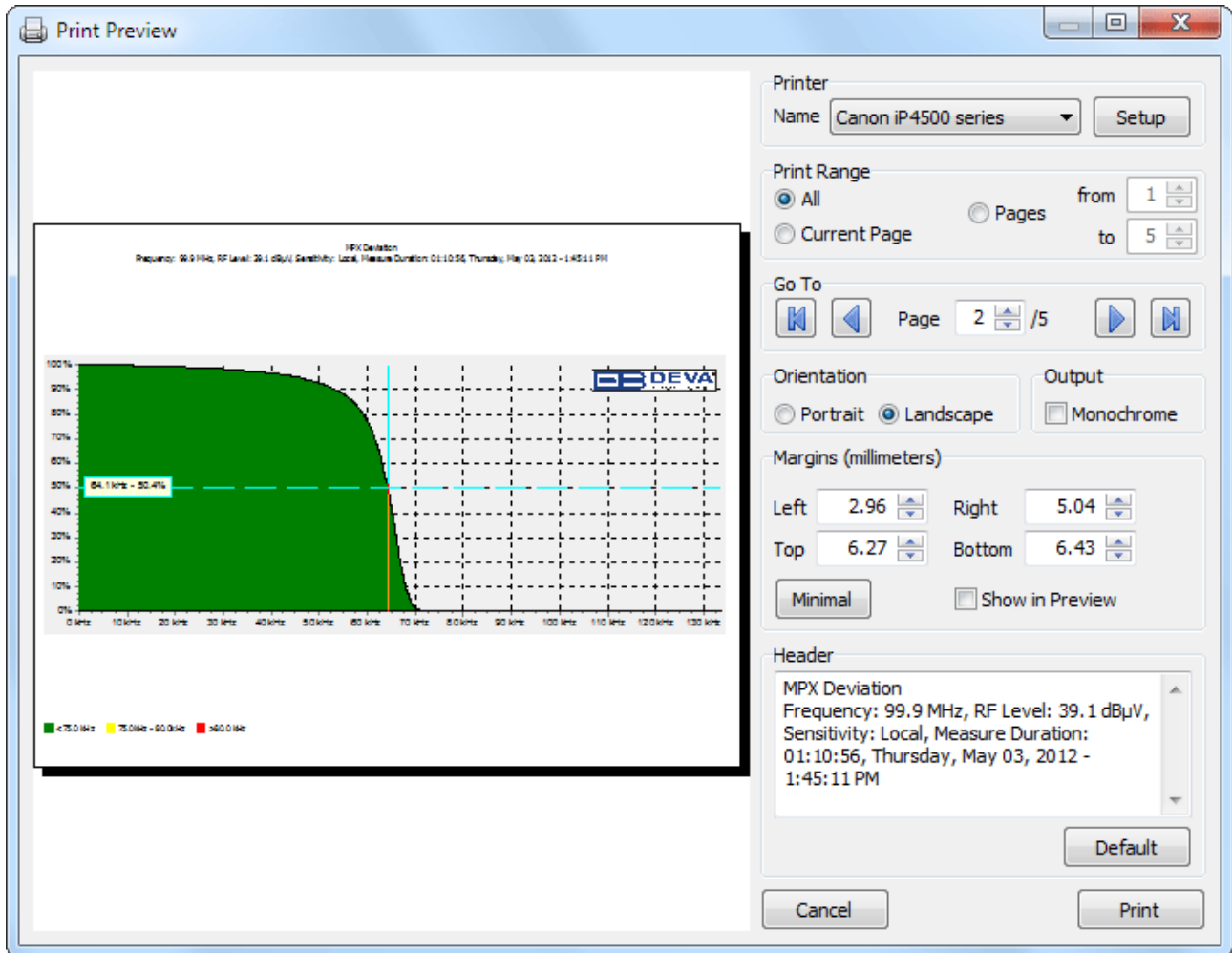
Main	0 AB	1 AB	2 AB	3 AB	4 AB	5 AB	6 AB	7 AB	8 AB	TMC	9 AB	10 AB	11 AB	12 AB	13 AB	14 AB	15 AB	RT+
------	------	------	------	------	------	------	------	------	------	-----	------	-------	-------	-------	-------	-------	-------	-----

Current

History

AB	T	R	S	L	Class	Content

Print Capabilities



Dialog content differs from tool to tool but functionality remains the same.

Select the printer from the **Printer** drop-down. From the Setup button you can modify your Printer settings if necessary (paper size, orientation, etc.).

Print Range provides easy way to select only desired pages to be printed.

From **Go To** section can be changed currently previewed page.

Output can be set to **Monochrome** independently of printer capabilities and will automatically convert the graphic(s) from color to monochrome.

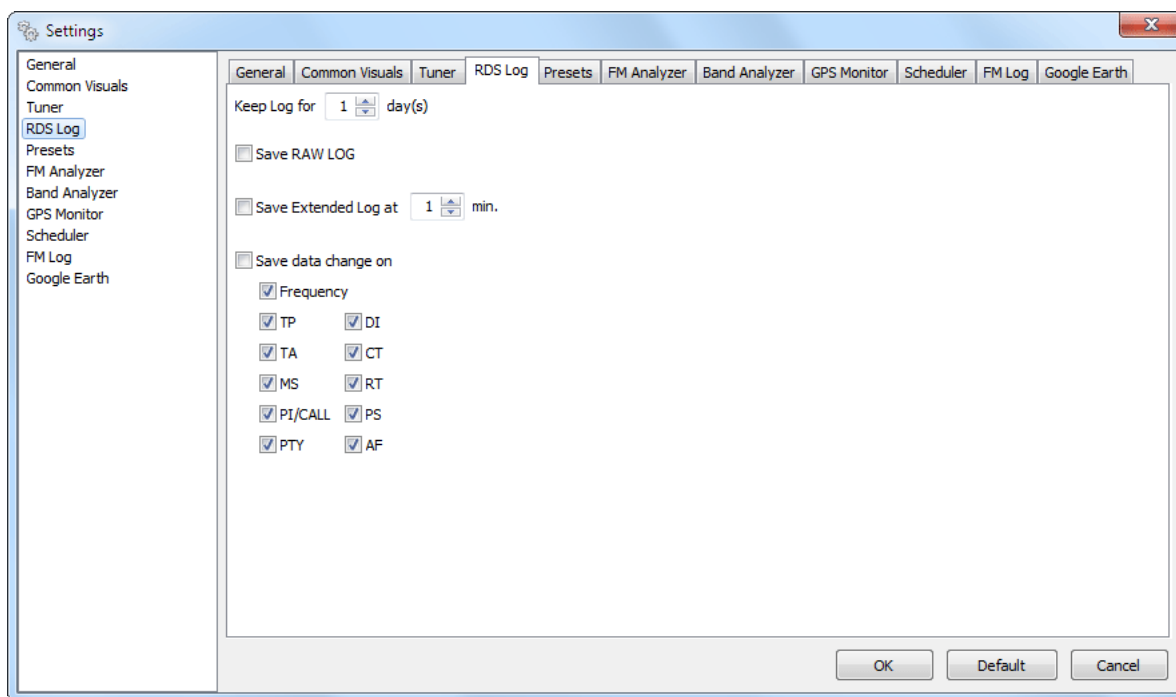
Margins allow to predefine reserved white space around graphic(s). Clicking on **Minimal** button will set margins to minimum allowed values for the printer selected. **Show in Preview** checkbox shows/hides margins in preview as dotted lines, but not include them in output.

Header can be altered into different fashions and restored to default by Default button.

After adjusting all of the properties you are able to print the graphic just by pressing the “**Print**” button.

Log Capabilities

RDS LOG SETTINGS



Keep Log – In this field you must select the length of the log in days. Maximum value: 30 days. Data older than the maximum assigned period will be erased from the Log automatically ([see “Automatic Log Maintenance” on page 81](#)).

Save RAW Log – By selecting this option the saving of the RAW data stream will be enabled.
ATTENTION: Be careful when using the “Save RAW Log” feature. Use it only if you really need it, because the RAW RDS data stream generates high capacity of stored data files. This may cause creating of big files and slowing down your PC functionality. Such kind of a problem may happen especially when Minimal System Requirements are not covered or near minimum.

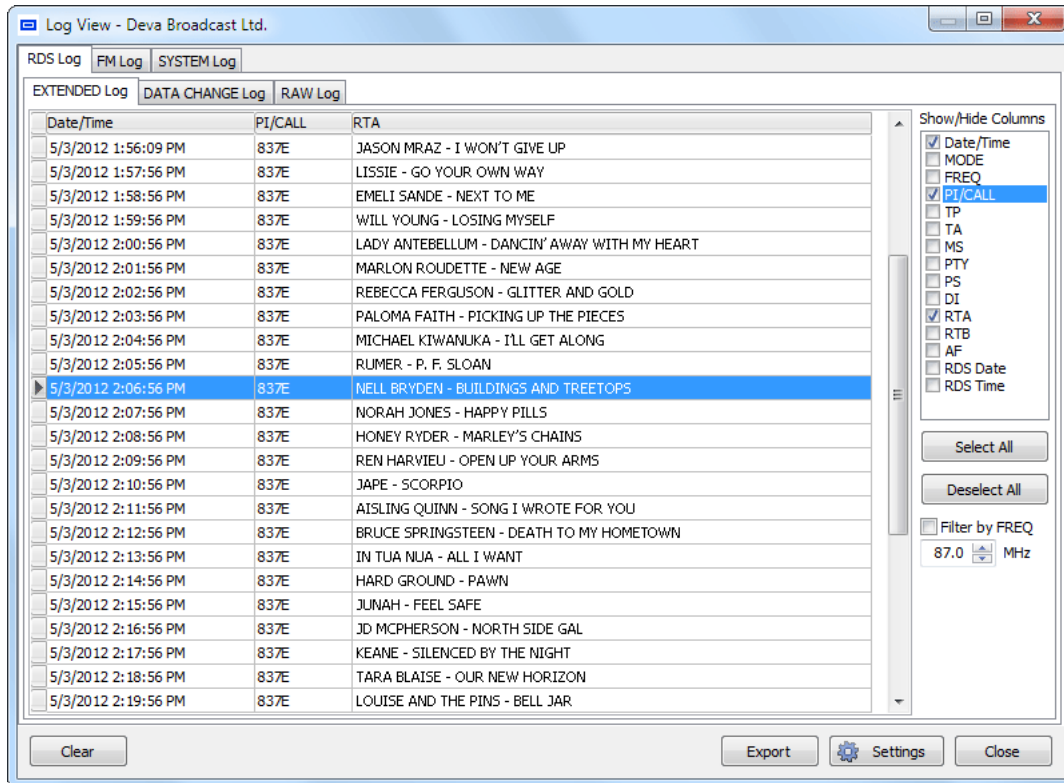
Save Extended Log – This option allows saving of the main RDS parameters and the tuner condition. The saving period may be changed up to 30 minutes.

Save data change on – Enabling this feature allows saving all of the changes, detected in listed parameters.

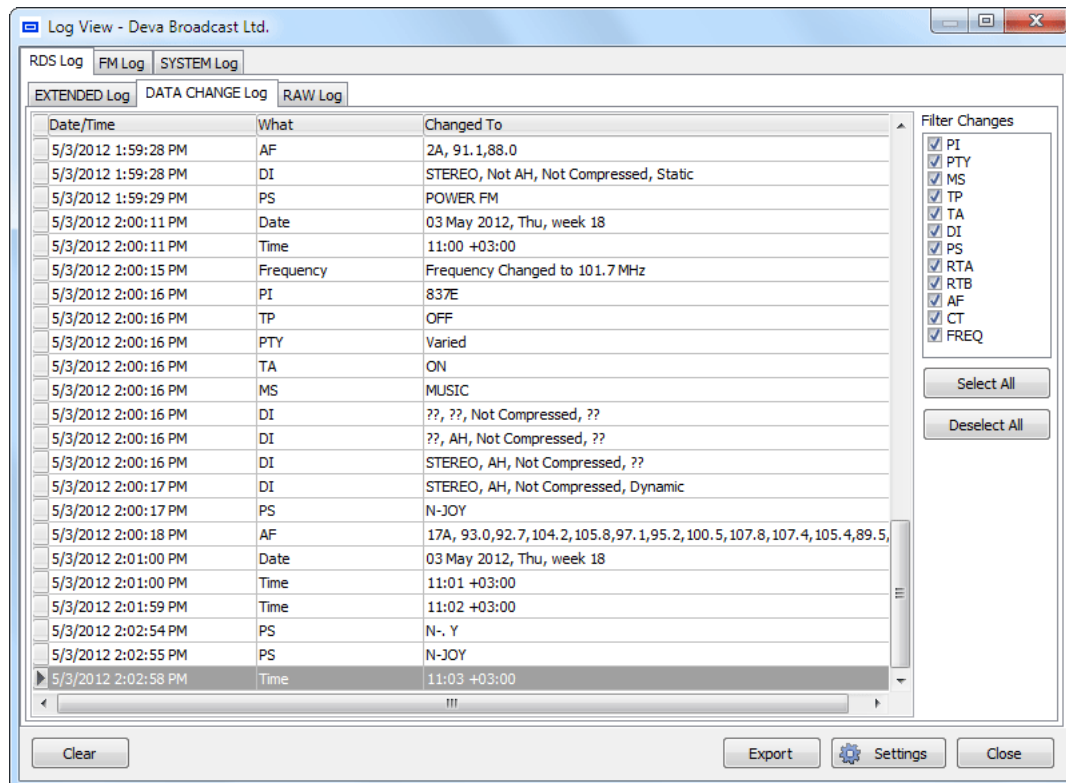
NOTE: In case of changing the working frequency or the input signal source, the “Change On” log conditions are reset and the incoming data will be treated as new.

TRACKING THE HISTORY SAVED IN THE RDS LOG

Using the LOG VIEW function makes possible to track and analyze all of the RDS data, saved in the history. Each one LOG provides access to all the actions and records made by a previously assigned schedule.



In the Extended Log sub window are listed main RDS parameters and tuner condition, saved at predefined period. In the right side are situated filtering options, allowing to choose preferred columns and frequency.



In the Data Change Log sub window are listed all occurred changes. In the right side are situated filtering options, allowing to choose which changes to be listed.

Log View - Deva Broadcast Ltd.

RDS Log FM Log SYSTEM Log

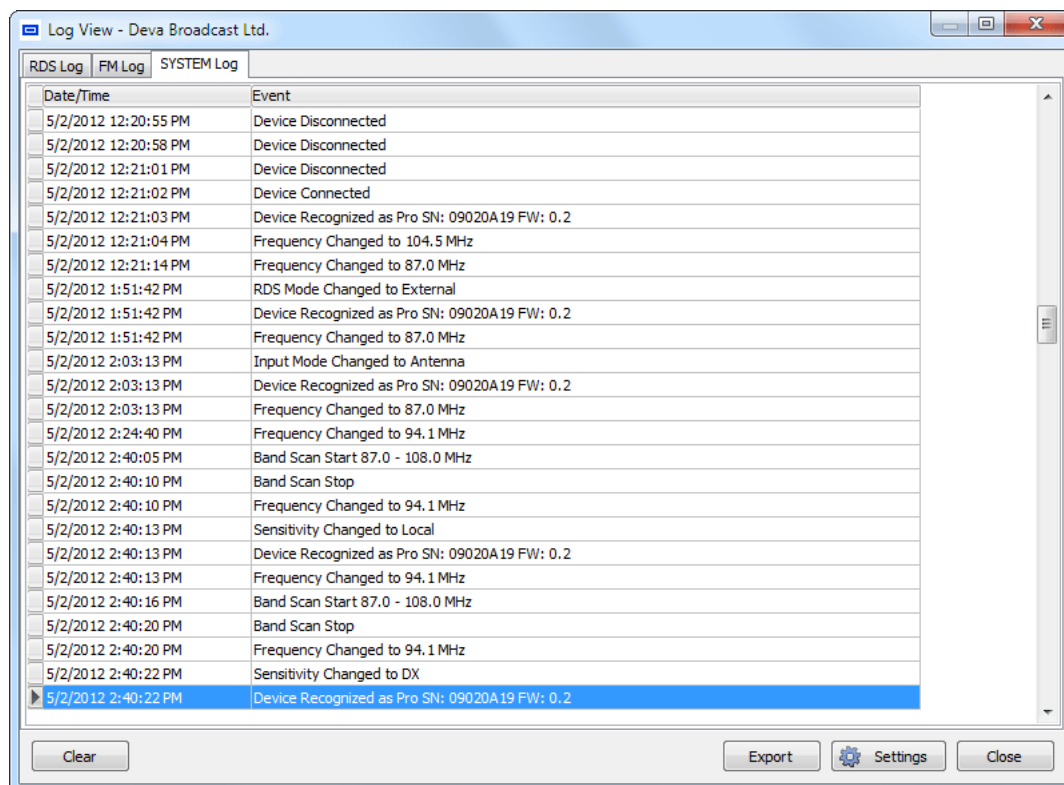
EXTENDED Log DATA CHANGE Log RAW Log

Date/Time	Group	FREQ	BLOCK 0	BLOCK 1	BLOCK 2	BLOCK 3
5/3/2012 2:03:54 PM	0A	101.7	837E	013C	1F8F	4E2D
5/3/2012 2:03:54 PM	0A	101.7	837E	0139	F137	4A4F
5/3/2012 2:03:54 PM	2A	101.7	837E	2123	4F4D	2054
5/3/2012 2:03:54 PM	0A	101.7	837E	013E	34A7	5920
5/3/2012 2:03:54 PM	8A	101.7	837E	8123	4140	0000
5/3/2012 2:03:55 PM	0A	101.7	837E	013F	B760	2020
5/3/2012 2:03:55 PM	3A	101.7	837E	3130	0026	CD46
5/3/2012 2:03:55 PM	0A	101.7	837E	013C	4D82	4E2D
5/3/2012 2:03:55 PM	8A	101.7	837E	8124	92BD	085B
5/3/2012 2:03:55 PM	0A	101.7	837E	0139	CBC7	4A4F
5/3/2012 2:03:55 PM	2A	101.7	837E	2124	454C	2E20
5/3/2012 2:03:55 PM	0A	101.7	837E	013E	B314	5920
5/3/2012 2:03:55 PM	8A	101.7	837E	8124	92BD	085B
5/3/2012 2:03:55 PM	0A	101.7	837E	013F	C2B8	2020
5/3/2012 2:03:55 PM	3A	101.7	837E	3130	4040	CD46
5/3/2012 2:03:55 PM	0A	101.7	837E	013C	8D91	4E2D
5/3/2012 2:03:56 PM	8A	101.7	837E	8124	92BD	085B
5/3/2012 2:03:56 PM	0A	101.7	837E	0139	1F8F	4A4F
5/3/2012 2:03:56 PM	2A	101.7	837E	2125	5A41	2052
5/3/2012 2:03:56 PM	0A	101.7	837E	013E	F137	5920
5/3/2012 2:03:56 PM	8A	101.7	837E	8124	4140	0000
5/3/2012 2:03:56 PM	0A	101.7	837E	013F	34A7	2020
5/3/2012 2:03:56 PM	3A	101.7	837E	3130	0026	CD46
5/3/2012 2:03:56 PM	0A	101.7	837E	013C	B760	4E2D

Clear Export Settings Close

In the RAW Change Log sub window contains all RAW data passed through. (see “Log Export” on page 80) (see also “Group Replayer”)

TRACKING THE HISTORY SAVED IN THE SYSTEM LOG



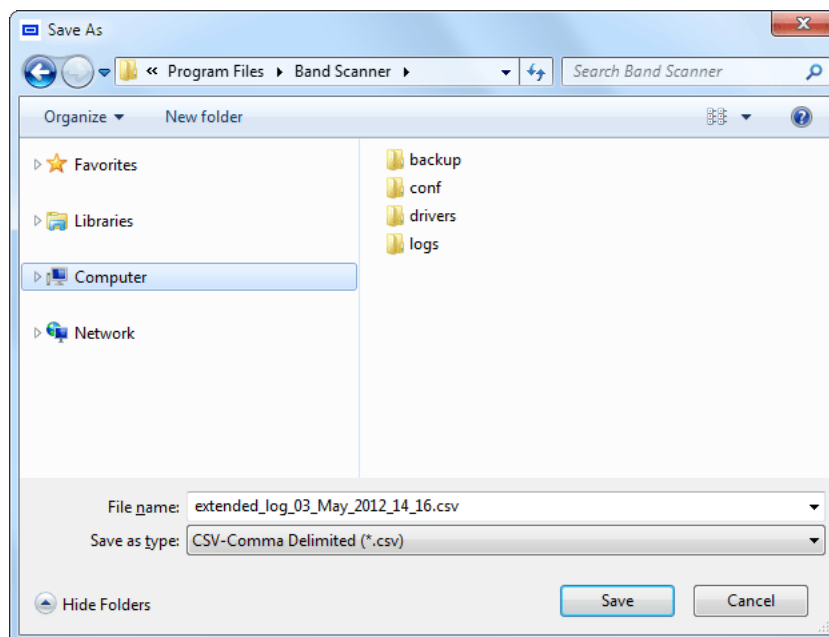
Date/Time	Event
5/2/2012 12:20:55 PM	Device Disconnected
5/2/2012 12:20:58 PM	Device Disconnected
5/2/2012 12:21:01 PM	Device Disconnected
5/2/2012 12:21:02 PM	Device Connected
5/2/2012 12:21:03 PM	Device Recognized as Pro SN: 09020A19 FW: 0.2
5/2/2012 12:21:04 PM	Frequency Changed to 104.5 MHz
5/2/2012 12:21:14 PM	Frequency Changed to 87.0 MHz
5/2/2012 1:51:42 PM	RDS Mode Changed to External
5/2/2012 1:51:42 PM	Device Recognized as Pro SN: 09020A19 FW: 0.2
5/2/2012 1:51:42 PM	Frequency Changed to 87.0 MHz
5/2/2012 2:03:13 PM	Input Mode Changed to Antenna
5/2/2012 2:03:13 PM	Device Recognized as Pro SN: 09020A19 FW: 0.2
5/2/2012 2:03:13 PM	Frequency Changed to 87.0 MHz
5/2/2012 2:24:40 PM	Frequency Changed to 94.1 MHz
5/2/2012 2:40:05 PM	Band Scan Start 87.0 - 108.0 MHz
5/2/2012 2:40:10 PM	Band Scan Stop
5/2/2012 2:40:10 PM	Frequency Changed to 94.1 MHz
5/2/2012 2:40:13 PM	Sensitivity Changed to Local
5/2/2012 2:40:13 PM	Device Recognized as Pro SN: 09020A19 FW: 0.2
5/2/2012 2:40:13 PM	Frequency Changed to 94.1 MHz
5/2/2012 2:40:16 PM	Band Scan Start 87.0 - 108.0 MHz
5/2/2012 2:40:20 PM	Band Scan Stop
5/2/2012 2:40:20 PM	Frequency Changed to 94.1 MHz
5/2/2012 2:40:22 PM	Sensitivity Changed to DX
5/2/2012 2:40:22 PM	Device Recognized as Pro SN: 09020A19 FW: 0.2

All the System messages carry information about the system's changes and have no direct influence on the RDS parameters reading.

LOG EXPORT

Regardless of type, all Logs could be exported to CSV (Comma Delimited) format (see [“General Settings”](#) on page 28) and can be opened and used with Microsoft Excel or any CSV-compatible software.

Clicking on Export button brings up ‘Save As’ dialog:



Exporting process automatically senses which of the logs you are watching at and pre-generates suitable name, including type of log and current date.

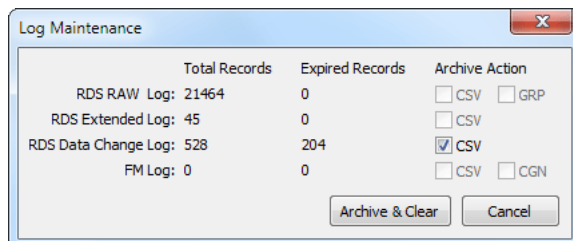
Additionally RAW Log can be saved as proprietary GRP format applicable into [“Group Replayer”](#) Tool.

NOTE: Erasing or modifying of the exported files do not cause any influence to the normal program execution.

AUTOMATIC LOG MAINTENANCE

On startup the Band Scanner Software performs automatic check of log retention depending on Log Settings. This helps to “fight” the log pile-up and at the same time offers possibility to backup the expired records in safe manner.

When expired records are found the following prompt will appear:



To Archive/Backup (and Clear afterwards) expired records, just select the suitable format for archive action and click on “Archive & Clear” button. If not sure or need to delay the maintenance process, simple click the “Cancel” button.

Backup files could be found under the “backup” folder, which resides inside the software installation (typically: C:\Program Files\Band Scanner\backup).

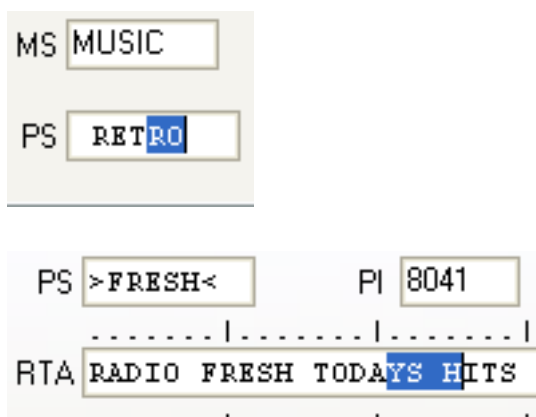
Specialities

MAIN-PS OR 0AB-PS

Band Scanner program visualizes PS in 2 different places - “Main” tab and “0AB” tab. At first glance, there is nothing in particular, but the difference is significant and may cause some misleadings!

In “Main” tab PS is visualized by “Whole PS” rule. “Whole PS” means that between 1-st and 8-th symbol there are no breakings. Even 1 missed symbol causes the rule to be wrong. This rule is used also when detecting “Change On”.

In “0AB” tab “Whole PS” rule has no use - every arrived PS symbol is visualized, no matter of the previous one or its place. Clicking inside the PS field you will notice that selection moves across the field, indicating where the current symbols were inserted. Same “selection crawl” can be found on “Main” tab along with both RT fields.



NOTE: In case the RDS stream is coming with errors, the “Whole PS” rule will be wrong at most of the cases, even PS may not be shown at all.

WHERE MY ALTERNATIVE FREQUENCIES GONE?

Sometimes AF List on “Main” tab is constantly empty. Don’t panic, simply open “0AB” tab. There you’ll find the AF Analyzer Tool. So where has the AFs disappeared? Many reasons may exist, but we will pay attention to the most frequent 2:

A) The tuned station doesn’t transmit AF and/or there are no “Declared AF”.

B) The program can’t “catch” all AF repetitions (errors in the stream). But AF Analyzer reports some readings. First the number of AFs must be transmitted (declared) followed by the AFs as described in the RDS/RBDS Standard. In this case the announced number of AFs doesn’t cover the received AFs, thus the program can’t specify the full AF List and indicates nothing.

WARRANTY TERMS AND CONDITIONS

I. TERMS OF SALE: DEVA Broadcast Ltd. products are sold with an understanding of “full satisfaction”; that is, full credit or refund will be issued for products sold as new if returned to the point of purchase within 30 days following their receipt, provided that they are returned complete and in an “as received” condition.

II. CONDITIONS OF WARRANTY: The following terms apply unless amended in writing by DEVA Broadcast Ltd.

A. The Warranty Registration Card supplied with this product must be completed and returned to DEVA Broadcast Ltd. within 10 days of delivery.

B. This Warranty applies only to products sold “as new.” It is extended only to the original end-user and may not be transferred or assigned without prior written approval by DEVA Broadcast Ltd.

C. This Warranty does not apply to damage caused by improper mains settings and/or power supply.

D. This Warranty does not apply to damage caused by misuse, abuse, accident or neglect. This Warranty is voided by unauthorized attempts at repair or modification, or if the serial identification label has been removed or altered.

III. TERMS OF WARRANTY: DEVA Broadcast Ltd. products are warranted to be free from defects in materials and workmanship.

A. Any discrepancies noted within TWO YEARS of the date of delivery will be repaired free of charge, or the equipment will be replaced with a new or remanufactured product at DEVA Broadcast Ltd. option.

B. Parts and labor for factory repair required after the one-year Warranty period will be billed at prevailing prices and rates.

IV. RETURNING GOODS FOR FACTORY REPAIR:

A. Equipment will not be accepted for Warranty or other repair without a Return Authorization (RA) number issued by DEVA Broadcast Ltd. prior to its return. An RA number may be obtained by calling the factory. The number should be prominently marked on the outside of the shipping carton.

B. Equipment must be shipped prepaid to DEVA Broadcast Ltd.. Shipping charges will be reimbursed for valid Warranty claims. Damage sustained as a result of improper packing for return to the factory is not covered under terms of the Warranty and may occasion additional charges.

PRODUCT REGISTRATION CARD

- All fields are required, or warranty registration is invalid and void

Your Company Name _____

Contact _____

Address Line 1 _____

Address Line 2 _____

City _____

State/Province _____ ZIP/Postal Code _____

Country _____

E-mail _____ Phone _____ Fax _____

Which DEVA Broadcast Ltd. product did you purchase? _____

Product Serial # _____

Purchase date ____ / ____ / ____ Installation date ____ / ____ / ____

Your signature*

*Signing this warranty registration form you are stating that all the information provided to DEVA Broadcast Ltd. are truth and correct. DEVA Broadcast Ltd. declines any responsibility for the provided information that could result in an immediate loss of warranty for the above specified product(s).

Privacy statement: DEVA Broadcast Ltd. will not share the personal information you provide on this card with any other parties.

APPENDIX A

PTY Code Description Used in RBDS Mode – North America

PTY	Short Name	Description
1	News	News reports, either local or network in origin.
2	Information	Programming that is intended to impart advice.
3	Sports	Sports reporting, commentary, and/or live event coverage, either local or network in origin.
4	Talk	Call-in and/or interview talk shows either local or national in origin.
5	Rock	Album cuts.
6	Classic Rock	Rock oriented oldies, often mixed with hit oldies, from a decade or more ago.
7	Adult Hits	An up-tempo contemporary hits format with no hard rock and no rap.
8	Soft Rock	Album cuts with a generally soft tempo.
9	Top 40	Current hits, often encompassing a variety of rock styles.
10	Country	Country music, including contemporary and traditional styles.
11	Oldies	Popular music, usually rock, with 80% or greater non-current music.
12	Soft	A cross between adult hits and classical, primarily non-current softrock originals.
13	Nostalgia	Big-band music.
14	Jazz	Mostly instrumental, includes both traditional jazz and more modern “smooth jazz.”
15	Classical	Mostly instrumentals, usually orchestral or symphonic music.
16	Rhythm and Blues	A wide range of musical styles, often called “urban contemporary.”
17	Soft R and B	Rhythm and blues with a generally soft tempo.
18	Foreign Language	Any programming format in a language other than English.
19	Religious Music	Music programming with religious lyrics.
20	Religious Talk	Call-in shows, interview programs, etc. with a religious theme.
21	Personality	A radio show where the on-air personality is the main attraction.
22	Public	Programming that is supported by listeners and/or corporate sponsors instead of advertising.
23	College	Programming produced by a college or university radio station.
24-28	Unassigned	
29	Weather	Weather forecasts or bulletins that are non-emergency in nature.
30	Emergency Test	Broadcast when testing emergency broadcast equipment or receivers. Not intended for searching or dynamic switching for consumer receivers. Receivers may, if desired, display “TEST” or “Emergency Test”.
31	Emergency	Emergency announcement made under exceptional circumstances to give warning of events causing danger of a general nature. Not to be used for searching - only used in a receiver for dynamic switching.

NOTE: These definitions can differ slightly between various language versions.

APPENDIX B

PTY Code Description Used in RDS Mode – Europe, Asia

PTY	Short Name	Description
1	News	Short accounts of facts, events and publicly expressed views, reportage and actuality.
2	Current affairs	Topical program expanding or enlarging upon the news, generally in different presentation style or concept, including debate, or analysis.
3	Information	Program the purpose of which is to impart advice in the widest sense.
4	Sport	Program concerned with any aspect of sport.
5	Education	Program intended primarily to educate, of which the formal element is fundamental.
6	Drama	All radio plays and serials.
7	Culture	Programs concerned with any aspect of national or regional culture.
8	Science	Programs about the natural sciences and technology.
9	Varied	Used for mainly speech-based programs usually of light-entertainment nature, not covered by other categories. Examples include: quizzes, games, personality interviews.
10	Pop	Commercial music, which would generally be considered to be of current popular appeal, often featuring in current or recent record sales charts.
11	Rock	Contemporary modern music, usually written and performed by young musicians.
12	Easy Listening	Current contemporary music considered to be “easy-listening”, as opposed to Pop, Rock or Classical, or one of the specialized music styles, Jazz, Folk or Country. Music in this category is often but not always, vocal, and usually of short duration.
13	Light classics	Classical Musical for general, rather than specialist appreciation. Examples of music in this category are instrumental music, and vocal or choral works.
14	Serious classics	Performances of major orchestral works, symphonies, chamber music etc., and including Grand Opera.
15	Other music	Musical styles not fitting into any of the other categories. Particularly used for specialist music of which Rhythm & Blues and Reggae are examples.
16	Weather	Weather reports and forecasts and Meteorological information.
17	Finance	Stock Market reports, commerce, trading etc.
18	Children's programs	For programs targeted at a young audience, primarily for entertainment and interest, rather than where the objective is to educate.
19	Social Affairs	Programs about people and things that influence them individually or in groups. Includes: sociology, history, geography, psychology and society.
20	Religion	Any aspect of beliefs and faiths, involving a God or Gods, the nature of existence and ethics.
21	Phone In	Involving members of the public expressing their views either by phone or at a public forum.
22	Travel	Features and programs concerned with travel to near and far destinations, package tours and travel ideas and opportunities. Not for use for Announcements about problems, delays, or roadworks affecting immediate travel where TP/TA should be used.
23	Leisure	Programs concerned with recreational activities in which the listener might participate. Examples include, Gardening, Fishing, Antique collecting, Cooking, Food & Wine etc.
24	Jazz Music	Polyphonic, syncopated music characterized by improvisation.
25	Country Music	Songs which originate from, or continue the musical tradition of the American Southern States. Characterized by a straightforward melody and narrative story line.
26	National Music	Current Popular Music of the Nation or Region in that country's language, as opposed to International 'Pop' which is usually US or UK inspired and in English.
27	Oldies Music	Music from the so-called “golden age” of popular music.
28	Folk Music	Music which has its roots in the musical culture of a particular nation, usually played on acoustic instruments. The narrative or story may be based on historical events or people.
29	Documentary	Program concerned with factual matters, presented in an investigative style.
30	Alarm Test	Broadcast when testing emergency broadcast equipment or receivers. Not intended for searching or dynamic switching for consumer receivers.. Receivers may, if desired, display “TEST” or “Alarm Test”.
31	Alarm	Emergency announcement made under exceptional circumstances to give warning of events causing danger of a general nature. Not to be used for searching - only used in a receiver for dynamic switching.