

DN-F65S Installation Guide

Box Contents

DN-F65S
Cut-out Template
Allen Key
Grille Removal Hook
Speaker Grille Adhesive
Installation Guide
Safety/Warranty Manual

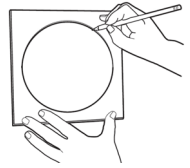
For additional product support or system applications, please visit denonpro.com/support.

To install the speaker, you need the following tools: (not included and can purchased at a local hardware store)

1. Stripping pliers
2. Flathead screwdriver
3. Speaker wire (14-16 gauge)
4. Drywall saw

Painting the Grille (optional)

1. Gently pull the grille using the included metal hook tool until the grille is removed from the speaker.
2. Remove the felt piece from the speaker grille.
3. Paint the speaker grille. Use spray paint to avoid paint clogging the holes in the grille.
4. Allow the paint to completely dry and ensure the grille holes are not blocked by paint.
5. Re-attach the felt piece to the speaker grille using additional adhesive (not included).
6. Re-attach the grille to the speaker.



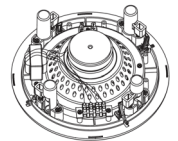
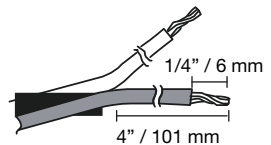
Find Proper Location for Installation

1. Ensure that the ceiling drywall thickness is between 3/8" (9.5 mm) and 1.2" (31 mm), with a mounting depth at least 3.1" (79 mm).
Note: Always be aware of what is behind the drywall, to avoid cutting into wiring, plumbing, or other hidden objects.
2. Use the cut-out template to mark the size of the hole.
3. Cut out the hole using a drywall saw.

Connecting the Speaker Wires

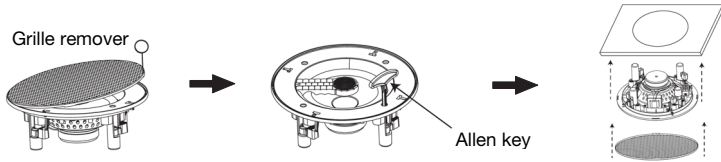
It is recommended to use color marking lines so that you can use them correctly.

1. Separate the speaker wires at both ends 4" (101 mm).
2. Use stripping pliers to remove the insulation at both ends of each wire, about 1/4" (6 mm).
3. Connect the outputs of your amplifier to the speaker terminals. Use a flathead screwdriver to install the wire into the 4 pin terminal holes and tighten the screws. Wire the 70V/10W and 100V/10W connectors to the appropriate terminals. Wire the hot/positive (+) connector and the cold/negative (-) connector to the appropriate terminals.



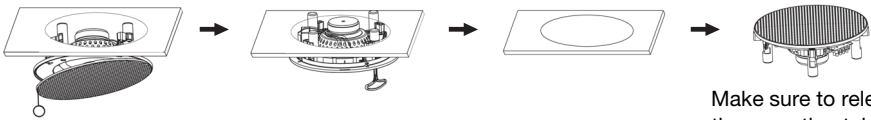
Installing the Speaker

1. Gently pull the grille using the included metal hook tool until the grille is removed from the speaker.
2. Add strips of the included adhesive to the 4 slots in the speaker.
3. Hold the tweeter bridge handle, insert the included Allen key into the hole, and push and rotate counter-clockwise to set all 4 mounting tabs to the open position. Make sure not to overtighten the screws.
4. Push the speaker into the ceiling. Depending on the thickness of the mounting material, it may be necessary to insert the Allen key and rotate clockwise to completely close. Press the speaker grille into the 4 slots where the adhesive strips are applied.



Removing the Speaker

1. Gently pull the grille using the included metal hook tool until the grille is removed from the speaker.
2. Hold the tweeter bridge handle, insert the included Allen key into the hole; push and rotate counter-clockwise to set all 4 mounting tabs to the open position.
3. Remove the speaker from the ceiling.



Make sure to release the mounting tabs to the closed position.

Technical Specifications

Low-Frequency Driver	6.5" / 165 mm	
Tweeter	0.51" / 13 mm	
Power Tappings	W (100V)	W (70V)
Bypass	8 Ω	8 Ω
Frequency Response	80 Hz – 20 kHz	
Driver Power	10 W	
Sensitivity	88 dB (1W/1m)	
Cutout Hole Diameter	8.39" / 213 mm	
Overall Diameter	9.69" / 246 mm	
In-Ceiling Clearance	2.99" / 76 mm	
Weight	3 lbs. / 1.3 kg	