

elipson® | Connect 250

CONNECTED AMPLIFIER

The Connect 250 is a compact class D amplifier with a comfortable power output of 2x50 watts, Wi-Fi and Bluetooth.



It easily drives a pair of passive speakers and allows to stream any music via Bluetooth or Wi-Fi from any platform or from your stored music files.

The Connect 250 is particularly suitable for integration in any environment, damp or not, thanks to its two mounting brackets. Then it can be placed against a wall or under a false ceiling. The remote infrared cable, supplied, facilitates its integration.

Thanks to Elipson BT App (Android and iOS) you can rename each Connect 250 device that appears on your Bluetooth network.

It is perfectly compatible with the other products of the ELIPSON CONNECT range, for multi-room use.



TECHNICAL

Number of output channels
2

Power (W / channel) | 4 ohms | 1 kHz
50 W @ 1% THD+N

Power (W / channel) | 8 ohms | 1 kHz
30 W @ 1% THD+N

Input Sensitivity
~300 mV – full power

Maximum input voltage (RMS)
1.5 V

Signal to noise ratio (SNR)
at THD+N <1%, f = 1 kHz, Gain = 20 dB
102 dB

Total Harmonic Distortion
THD + N @ 1kHz
< 0.1%

Resolution
44.1kHz/24bit

Bluetooth version & codec
5.0 - SBC

Network
Wi-Fi 2,4GHz IEEE 802.11 b/g/n - Ethernet
Audio multiroom up to 10 rooms,
depending on the quality of the network

Supply voltage
24V/5A DC

Power consumption in standby mode
< 0.5 W

ACCESSORIES PARTICULARITY



Wall mount and
remote infrared sensor
included



Protected Audio connections
suitable for damp areas

DIMENSIONS WEIGHT

Amplifier size
L x H x D: 120 x 30 x 120 mm

Power supply size
L x H x D: 170 x 40 x 65 mm

Weight – without power supply and accessories
240 g

PACKAGING UNIT X1

Dimensions
L x H x D: 240 x 100 x 180 mm

Gross weight
1,1 kg

PACKAGING UNITS X8

Dimensions
TBC

Gross weight
TBC

PRODUCT CODES UNIT X1

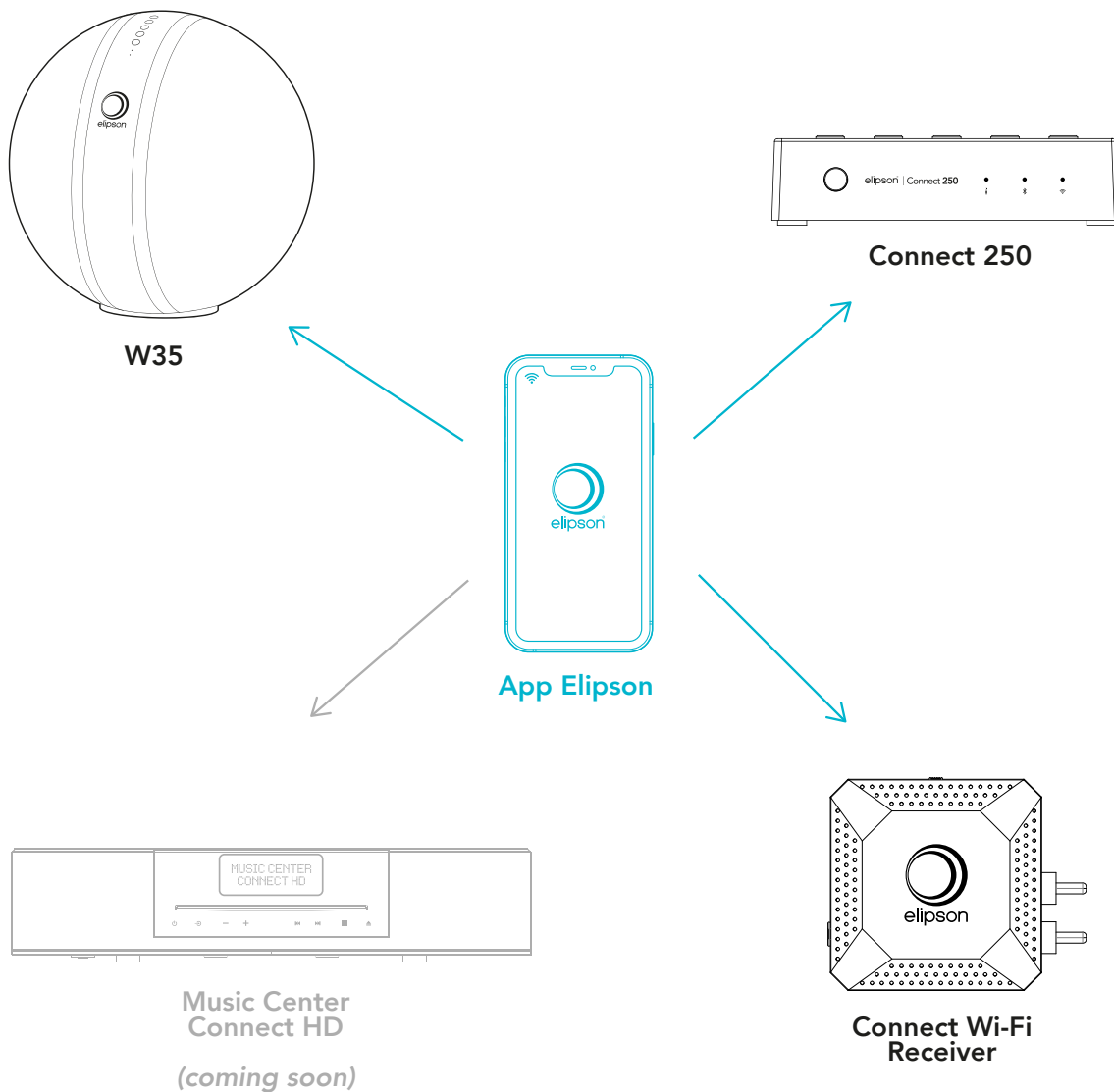
SKU
ELICON250

EAN
3700795191637

PRODUCT CODES UNITS X8

SKU
ELICON250X8

EAN
3700795192580



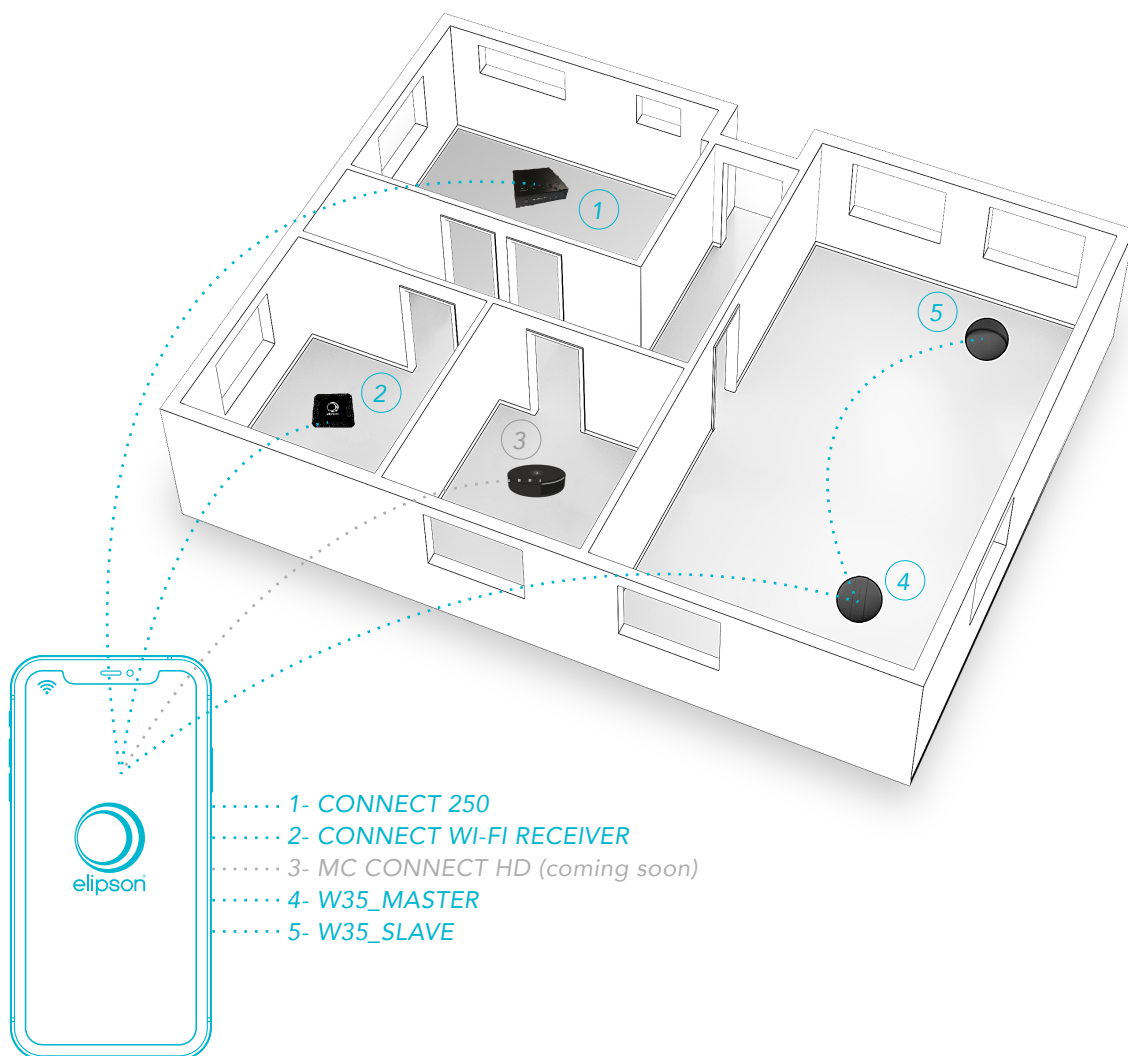
multiroom

WITH WI-FI AND ELIPSON CONNECT APP*

**Elipson compatible devices :*
W35, Connect 250, Connect Wi-Fi Receiver, and Music Center Connect HD (coming soon).



multiroom



Elipson Connect and Elipson BT Apps are available
on the App store or on Google Play



elipson
connect

www.elipson.com

Update : 2020/10/14 - Specifications could be changed without notice.